

## Anti-PLEKHM2 Antibody

Catalog Number: A11280

### About PLEKHM2

PLEKHM2, also known as SKIP, is a member of the M family of Pleckstrin homology domain-containing proteins. While little is known of PLEKHM2, a recent study examining differential gene expression in human hematopoietic stem cells has shown it to be specifically expressed in stem cells, suggesting that PLEKHM2 may play a role in erythroid commitment and development. Other studies have shown that PLEKHM2 is required for interaction with the Salmonella virulence factor SifA for Salmonella pathogenesis, suggesting that PLEKHM2 has cellular roles other than in the developing embryo.

### Overview

Product Name	Anti-PLEKHM2 Antibody
Reactive Species	Human, Mouse, Rat
Description	Boster Bio Anti-PLEKHM2 Antibody (Catalog # A11280). Tested in ELISA, WB, IHC-P, IF applications. This antibody reacts with Human, Mouse, Rat.
Application	ELISA, IF, IHC-P, WB
Clonality	Polyclonal
Formulation	PLEKHM2 Antibody is supplied in PBS containing 0.02% sodium azide.
Storage Instructions	PLEKHM2 antibody can be stored at 4°C for three months and -20°C, stable for up to one year. Avoid repeated freeze-thaw cycles. Antibodies should not be exposed to prolonged high temperatures.
Host	Rabbit
Uniprot ID	Q8IWE5

### Technical Details

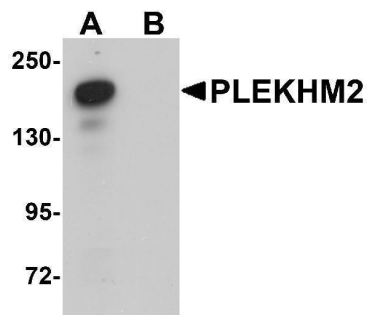
Immunogen	PLEKHM2 antibody was raised against a 17 amino acid synthetic peptide from near the carboxy terminus of human PLEKHM2. The immunogen is located within the last 50 amino acids of PLEKHM2.
Predicted Reactive Species	Rat
Isotype	IgG
Form	Liquid
Concentration	1 mg/mL
Purification	PLEKHM2 Antibody is affinity chromatography purified via peptide column.

**Suggested Dilutions**

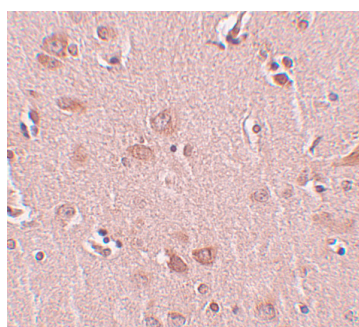
PLEKHM2 antibody can be used for detection of PLEKHM2 by Western blot at 0.5 ug/mL. Antibody can also be used for immunohistochemistry starting at 5 ug/mL. For immunofluorescence start at 20 ug/mL.

Antibody validated: Western Blot in rat samples; Immunohistochemistry in human samples and Immunofluorescence in human samples. All other applications and species not yet tested. Optimal dilutions for each application should be determined by the researcher.

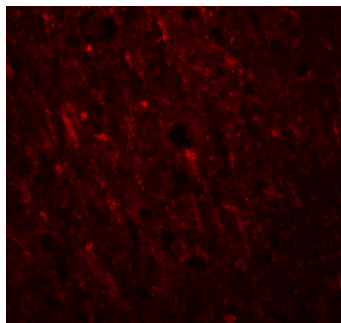
## Anti-PLEKHM2 Antibody (A11280) Images



Western blot analysis of PLEKHM2 in rat brain tissue lysate with PLEKHM2 antibody at 0.5 ug/mL in (A) the absence and (B) the presence of blocking peptide.



Immunohistochemistry of PLEKHM2 in human liver tissue with FAM59A antibody at 5 ug/mL.



Immunofluorescence of PLEKHM2 in Human Brain cells with PLEKHM2 antibody at 20 ug/mL.

### Submit a product review to [Biocompare.com](https://www.biocompare.com)

Submit a review of this product to [Biocompare.com](https://www.biocompare.com) to receive a \$20 Amazon.com giftcard! Your reviews help your fellow scientists make the right decisions. Thank you for your contribution.



Anti-PLEKHM2 Antibody

For Research Use Only. Not for use in diagnostic procedures.