

Anti-LRRTM3 Antibody

Catalog Number: A11290

About LRRTM3

The Leucine-rich repeat transmembrane neuronal proteins (LRRTMs) are differentially expressed in the nervous system and were recently found to instruct presynaptic and mediate postsynaptic glutamatergic differentiation, with LRRTM1 and LRRTM2 most potent at inducing presynaptic differentiation. Recent evidence suggests that LRRTM3 promotes the processing of amyloid-precursor protein (APP) by the beta-secretase BACE, leading to the proteolytic production of the Aβ42 peptide that is the main component of amyloid plaques. Furthermore, LRRTM3 maps to a region of chromosome 10 linked to both late-onset Alzheimer's disease (AD) and elevated plasma Aβ42 levels, suggesting that LRRTM3 is a functional and positional candidate gene for AD.

Overview

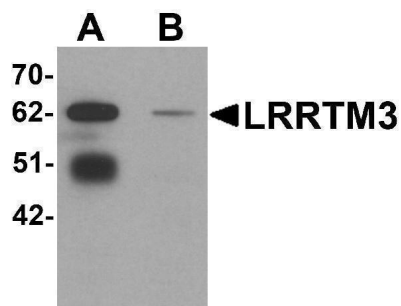
Product Name	Anti-LRRTM3 Antibody
Reactive Species	Human, Mouse, Rat
Description	Boster Bio Anti-LRRTM3 Antibody (Catalog # A11290). Tested in ELISA, WB, IHC-P, IF applications. This antibody reacts with Human, Mouse, Rat.
Application	ELISA, IF, IHC-P, WB
Clonality	Polyclonal
Formulation	LRRTM3 Antibody is supplied in PBS containing 0.02% sodium azide.
Storage Instructions	Antibody can be stored at 4°C up to one year. Antibodies should not be exposed to prolonged high temperatures.
Host	Rabbit
Uniprot ID	Q86VH5

Technical Details

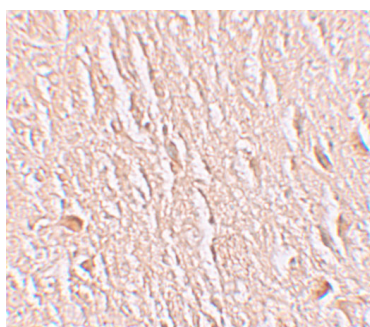
Immunogen	LRRTM3 antibody was raised against a 18 amino acid synthetic peptide near the carboxy terminus of human LRRTM3. The immunogen is located within the last 50 amino acids of LRRTM3.
Predicted Reactive Species	Bovine, Mouse, Rat
Cross Reactivity	At least two isoforms of LRRTM3 are known to exist; this antibody will only detect the larger isoform.
Isotype	IgG
Form	Liquid
Concentration	1 mg/mL

Purification	LRRTM3 Antibody is affinity chromatography purified via peptide column.
Suggested Dilutions	LRRTM3 antibody can be used for detection of LRRTM3 by Western blot at 0.5 ug/mL. Antibody can also be used for immunohistochemistry starting at 2.5 ug/mL. For immunofluorescence start at 20 ug/mL. Antibody validated: Western Blot in mouse samples; Immunohistochemistry in human samples and Immunofluorescence in human samples. All other applications and species not yet tested. Optimal dilutions for each application should be determined by the researcher.

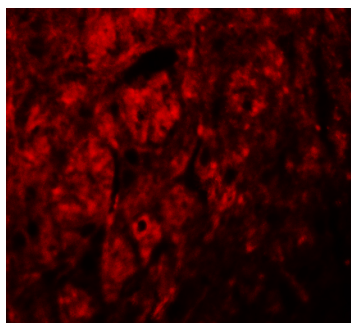
Anti-LRRTM3 Antibody (A11290) Images



Western blot analysis of LRRTM3 in mouse brain tissue lysate with LRRTM3 antibody at 0.5 ug/mL in (A) the absence and (B) the presence of blocking peptide.



Immunohistochemistry of LRRTM3 in human brain tissue with LRRTM3 antibody at 2.5 ug/mL



Immunofluorescence of LRRTM3 in human brain tissue with LRRTM3 antibody at 20 ug/mL.

Submit a product review to [Biocompare.com](https://www.biocompare.com)

Submit a review of this product to [Biocompare.com](https://www.biocompare.com) to receive a \$20 Amazon.com giftcard! Your reviews help your fellow scientists make the right decisions. Thank you for your contribution.



Anti-LRRTM3 Antibody

For Research Use Only. Not for use in diagnostic procedures.