

Anti-Raftlin RFTN1 Antibody

Catalog Number: A11324

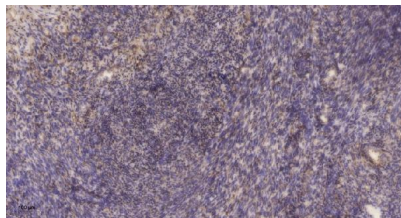
Overview

| | |
|----------------------|---|
| Product Name | Anti-Raftlin RFTN1 Antibody |
| Reactive Species | Human, Mouse |
| Description | Boster Bio Anti-Raftlin RFTN1 Antibody catalog # A11324. Tested in WB, IHC applications. This antibody reacts with Human, Mouse. |
| Application | IHC, WB |
| Clonality | Polyclonal |
| Formulation | Liquid in PBS containing 50% glycerol, 0.5% stabilizing protein and 0.02% sodium azide. This antibody is supplied in a stabilized formulation. Compatibility with conjugation reactions depends on the chemistry of the conjugation method used. For conjugation methods that are not compatible with the stabilizing components present in this formulation, a carrier-free antibody format is required. |
| Storage Instructions | Store at -20°C for one year. For short term storage and frequent use, store at 4°C for up to one month. Avoid repeated freeze-thaw cycles. |
| Host | Rabbit |
| Uniprot ID | Q14699 |

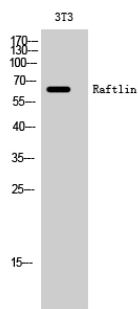
Technical Details

| | |
|---------------------|---|
| Immunogen | The antiserum was produced against synthesized peptide derived from human RFTN1. AA range:432-481 |
| Isotype | IgG |
| Form | Liquid |
| Concentration | 1 mg/ml |
| Purification | Immunogen affinity purified |
| Suggested Dilutions | WB 1:500-2000 IHC 1:50-300 |

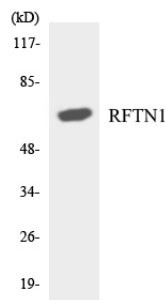
Anti-Raftlin RFTN1 Antibody (A11324) Images



Immunohistochemical analysis of paraffin-embedded human uterus. 1, Antibody was diluted at 1:200 (4° overnight). 2, Tris-EDTA, pH9.0 was used for antigen retrieval. 3, Secondary antibody was diluted at 1:200 (room temperature, 45min).



Western Blot analysis of 3T3 cells using Raftlin Polyclonal Antibody



Western blot analysis of the lysates from RAW264.7 cells using RFTN1 antibody.

Submit a product review to Biocompare.com

Submit a review of this product to Biocompare.com to receive a \$20 Amazon.com giftcard! Your reviews help your fellow scientists make the right decisions. Thank you for your contribution.



Anti-Raftlin RFTN1 Antibody

For Research Use Only. Not for use in diagnostic procedures.