

## Anti-ANKLE2 Antibody

Catalog Number: A11367

### About ANKLE2

Ankyrins are membrane adaptor molecules that play important roles in coupling integral membrane proteins to the spectrin-based cytoskeleton network. ANKLE2 (Ankyrin repeat and LEM domain containing 2) is a member of ankyrin repeat and LEM domain containing family. It is a potential single-pass membrane protein that contains three ankyrin repeats and a Lem domain. Ankyrin repeats mediate protein-protein interactions and are among the most common structural motifs in known proteins. The function of this protein is still under investigation.

### Overview

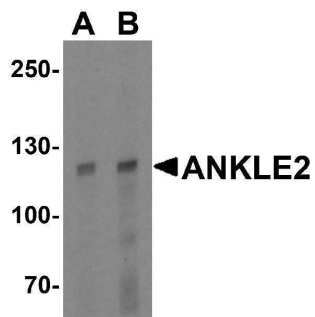
Product Name	Anti-ANKLE2 Antibody
Reactive Species	Human, Mouse, Rat
Description	Boster Bio Anti-ANKLE2 Antibody (Catalog # A11367). Tested in ELISA, WB applications. This antibody reacts with Human, Mouse, Rat.
Application	ELISA, WB
Clonality	Polyclonal
Formulation	ANKLE2 Antibody is supplied in PBS containing 0.02% sodium azide.
Storage Instructions	ANKLE2 antibody can be stored at 4°C for three months and -20°C, stable for up to one year. Avoid repeated freeze-thaw cycles. Antibodies should not be exposed to prolonged high temperatures.
Host	Chicken
Uniprot ID	Q86XL3

### Technical Details

Immunogen	ANKLE2 antibody was raised against a 19 amino acid synthetic peptide near the center of human ANKLE2. The immunogen is located within amino acids 280 - 330 of ANKLE2.
Cross Reactivity	Three isoforms of ANKLE2 are known to exist; this antibody will detect all three. ANKLE2 antibody is predicted to not cross-react with ANKLE1.
Isotype	IgY
Form	Liquid
Concentration	1 mg/mL
Purification	ANKLE2 Antibody is affinity chromatography purified via peptide column.
Suggested Dilutions	ANKLE2 antibody can be used for detection of ANKLE2 by Western blot at 1 - 2 ug/mL. Antibody validated: Western Blot in human samples. All other applications and species not yet

tested. Optimal dilutions for each application should be determined by the researcher.

## Anti-ANKLE2 Antibody (A11367) Images



Western blot analysis of ANKLE2 in human testis tissue lysate with ANKLE2 antibody at (A) 1 and (B) 2 ug/mL.

### Submit a product review to Biocompare.com

Submit a review of this product to Biocompare.com to receive a \$20 Amazon.com giftcard! Your reviews help your fellow scientists make the right decisions. Thank you for your contribution.



### Anti-ANKLE2 Antibody

For Research Use Only. Not for use in diagnostic procedures.