

Anti-ERAL1 Antibody Picoband®

Catalog Number: A11370-1

About ERAL1

The protein encoded by this gene is a GTPase that localizes to the mitochondrion. The encoded protein binds to the 3' terminal stem loop of 12S mitochondrial rRNA and is required for proper assembly of the 28S small mitochondrial ribosomal subunit. Deletion of this gene has been shown to cause mitochondrial dysfunction, growth retardation, and apoptosis. Several transcript variants encoding different isoforms have been found for this gene.

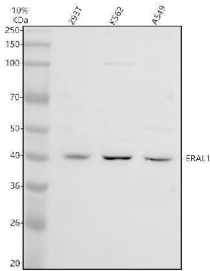
Overview

Product Name	Anti-ERAL1 Antibody Picoband®
Reactive Species	Human
Description	Boster Bio Anti-ERAL1 Antibody Picoband® catalog # A11370-1. Tested in WB, IHC, IP, ELISA applications. This antibody reacts with Human. The brand Picoband indicates this is a premium antibody that guarantees superior quality, high affinity, and strong signals with minimal background in Western blot applications. Only our best-performing antibodies are designated as Picoband, ensuring unmatched performance.
Application	ELISA, IP, IHC, WB
Clonality	Polyclonal
Formulation	Each vial contains 4 mg Trehalose, 0.9 mg NaCl, 0.2 mg Na ₂ HPO ₄ .
Storage Instructions	At -20°C for one year from date of receipt. After reconstitution, at 4°C for one month. It can also be aliquotted and stored frozen at -20°C for six months. Avoid repeated freezing and thawing.
Host	Rabbit
Uniprot ID	O75616

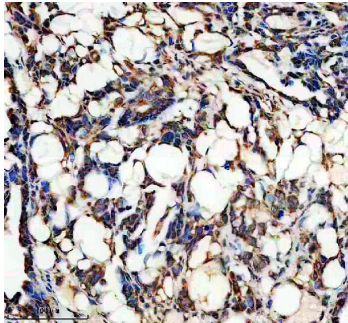
Technical Details

Immunogen	E.coli-derived human ERAL1 recombinant protein (Position: S77-D421).
Form	Lyophilized
Concentration	Adding 0.2 ml of distilled water will yield a concentration of 500 ug/ml.
Purification	Immunogen affinity purified.
Suggested Dilutions	Western blot, 0.25-0.5 ug/ml, Human Immunohistochemistry(Paraffin-embedded Section), 2-5 ug/ml, Human, Rat Immunocytochemistry/Immunofluorescence, 5 ug/ml, Human

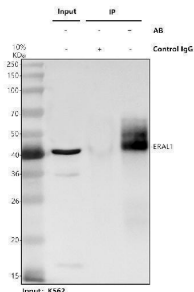
Anti-ERAL1 Antibody Picoband® (A11370-1) Images



Western blot analysis of ERAL1 using anti-ERAL1 antibody (A11370-1). Electrophoresis was performed on a 10% SDS-PAGE gel at 80V (Stacking gel) / 120V (Resolving gel) for 2 hours. The sample well of each lane was loaded with 30 ug of sample under reducing conditions. Lane 1: human 293T whole cell lysates, Lane 2: human K562 whole cell lysates, Lane 3: human A549 whole cell lysates. After electrophoresis, proteins were transferred to a nitrocellulose membrane at 150 mA for 50-90 minutes. Blocked the membrane with 5% non-fat milk/TBS for 1.5 hour at RT. The membrane was incubated with rabbit anti-ERAL1 antigen affinity purified polyclonal antibody (A11370-1) at 0.5 ug/mL overnight at 4°C, then washed with TBS-0.1%Tween 3 times with 5 minutes each and probed with a goat anti-rabbit IgG-HRP secondary antibody at a dilution of 1:5000 for 1.5 hour at RT. The signal is developed using an ECL Plus Western Blotting Substrate (Catalog # AR1196-200) with Tanon 5200 system. A specific band was detected for ERAL1 at approximately 40 kDa. The expected band size for ERAL1 is at 48 kDa.



IHC analysis of ERAL1 using anti-ERAL1 antibody (A11370-1). ERAL1 was detected in a paraffin-embedded section of human ovarian cancer tissue. Heat mediated antigen retrieval was performed in EDTA buffer (pH 8.0, epitope retrieval solution). The tissue section was blocked with 10% goat serum. The tissue section was then incubated with 2 ug/ml rabbit anti-ERAL1 Antibody (A11370-1) overnight at 4°C. Peroxidase Conjugated Goat Anti-rabbit IgG was used as secondary antibody and incubated for 30 minutes at 37°C. The tissue section was developed using HRP Conjugated Rabbit IgG Super Vision Assay Kit (Catalog # SV0002) with DAB as the chromogen.



Immunoprecipitating ERAL1 in K562 whole cell lysate. Western blot analysis of ERAL1 using anti-ERAL1 antibody (A11370-1). Lane 1: K562 whole cell lysates (30ug), Lane 2: Rabbit control IgG instead of anti-ERAL1 antibody in K562 whole cell lysate, Lane 3: anti-ERAL1 antibody (2ug) + K562 whole cell lysate (500ug). After electrophoresis, proteins were transferred to a membrane. Then the membrane was incubated with rabbit anti-ERAL1 antigen affinity purified polyclonal antibody (A11370-1) at a dilution of 0.5 ug/mL and probed with a mouse anti-rabbit IgG-HRP secondary antibody (Catalog # BM2007). The signal is developed using ECL Plus Western Blotting Substrate (Catalog # AR1197). A specific band was detected for ERAL1 at approximately 40 kDa. The expected band size for ERAL1 is at 48 kDa.

Submit a review of this product to Biocompare.com to receive a \$20 Amazon.com giftcard! Your reviews help your fellow scientists make the right decisions. Thank you for your contribution.



Anti-ERAL1 Antibody

For Research Use Only. Not for use in diagnostic procedures.