

## Anti-FAM48A SUPT20H Antibody

Catalog Number: A11433

### Overview

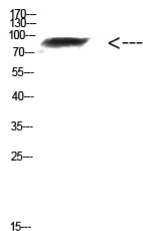
Product Name	Anti-FAM48A SUPT20H Antibody
Reactive Species	Human, Mouse, Rat
Description	Boster Bio Anti-FAM48A SUPT20H Antibody catalog # A11433. Tested in WB, ELISA applications. This antibody reacts with Human, Mouse, Rat.
Application	ELISA, WB
Clonality	Polyclonal
Formulation	PBS, pH 7.4, containing 0.02% sodium azide as Preservative and 50% Glycerol.
Storage Instructions	Store at -20°C for one year. For short term storage and frequent use, store at 4°C for up to one month. Avoid repeated freeze-thaw cycles.
Host	Rabbit
Uniprot ID	Q8NEM7

### Technical Details

Immunogen	The antiserum was produced against synthesized peptide derived from the Internal region of human FAM48A. AA range:231-280
Isotype	IgG
Form	Liquid
Concentration	1 mg/ml
Purification	Immunogen affinity purified
Suggested Dilutions	WB 1:500-2000 ELISA 1:10000-20000

## Anti-FAM48A SUPT20H Antibody (A11433) Images

---



Western Blot analysis of mouse-kidney cells using Antibody diluted at 1000. Secondary antibody was diluted at 1:20000

---

### Submit a product review to Biocompare.com

Submit a review of this product to Biocompare.com to receive a \$20 Amazon.com giftcard! Your reviews help your fellow scientists make the right decisions. Thank you for your contribution.



Anti-FAM48A SUPT20H Antibody

For Research Use Only. Not for use in diagnostic procedures.