

Anti-RPA Interacting Protein Antibody

Catalog Number: A11439

About RPAIN

Replication protein A (RPA) is a single-stranded-DNA binding protein involved in numerous eukaryotic DNA processes including replication, repair and recombination. RPA interacting protein (RPA IP) has been identified as an adapter protein that is involved in RPA nuclear import instead of the prototypical importin proteins that normally mediate nuclear import. Multiple isoforms of RPA IP are known to exist, with the longest isoform localized to the cytoplasm. Isoform 2 is sumoylated and is located in the PML nuclear body within the nucleus. It has been suggested that this isoform mediates the localization of the RPA complex into the PML nuclear body, thereby participating in RPA function in DNA metabolism.

Overview

Product Name	Anti-RPA Interacting Protein Antibody
Reactive Species	Human, Mouse, Rat
Description	Boster Bio Anti-RPA Interacting Protein Antibody (Catalog # A11439). Tested in ELISA, WB, IHC-P applications. This antibody reacts with Human, Mouse, Rat.
Application	ELISA, IHC-P, WB
Clonality	Polyclonal
Formulation	RPA Interacting Protein Antibody is supplied in PBS containing 0.02% sodium azide.
Storage Instructions	RPA Interacting Protein antibody can be stored at 4°C for three months and -20°C, stable for up to one year. Avoid repeated freeze-thaw cycles. Antibodies should not be exposed to prolonged high temperatures.
Host	Rabbit
Uniprot ID	Q86UA6

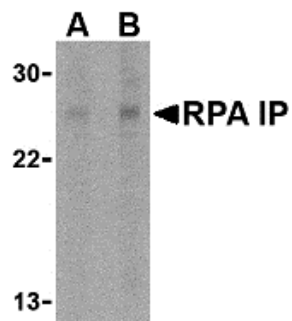
Technical Details

Immunogen	RPA IP antibody was raised against a 17 amino acid synthetic peptide from near the carboxy terminus of human RPA IP. The immunogen is located within the last 50 amino acids of RPA Interacting Protein.
Predicted Reactive Species	Rat
Isotype	IgG
Form	Liquid
Concentration	1 mg/mL
Purification	RPA Interacting Protein Antibody is affinity chromatography purified via peptide column.

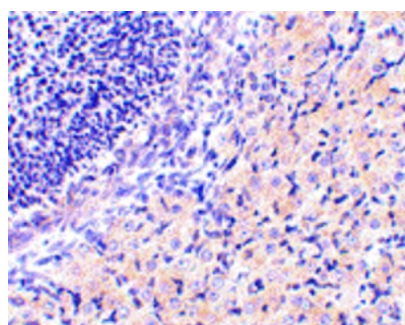
Suggested Dilutions

RPA Interacting Protein antibody can be used for detection of RPA Interacting Protein by Western blot at 1 - 2 ug/mL. Antibody can also be used for immunohistochemistry starting at 2.5 ug/mL. Antibody validated: Western Blot in human samples and Immunohistochemistry in mouse samples. All other applications and species not yet tested. Optimal dilutions for each application should be determined by the researcher.

Anti-RPA Interacting Protein Antibody (A11439) Images



Western blot analysis of RPA Interacting Protein in Jurkat cell lysate with RPA Interacting Protein antibody at (A) 1 and (B) 2 ug/mL.



Immunohistochemistry of RPA Interacting Protein in mouse stomach tissue with RPA Interacting Protein antibody at 2.5 ug/mL.

Submit a product review to [Biocompare.com](https://www.biocompare.com)

Submit a review of this product to [Biocompare.com](https://www.biocompare.com) to receive a \$20 Amazon.com giftcard! Your reviews help your fellow scientists make the right decisions. Thank you for your contribution.



Anti-RPA Interacting Protein Antibody

For Research Use Only. Not for use in diagnostic procedures.