

Anti-RPB11 POLR2J Antibody

Catalog Number: A11442

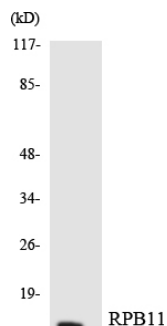
Overview

Product Name	Anti-RPB11 POLR2J Antibody
Reactive Species	Human, Mouse
Description	Boster Bio Anti-RPB11 POLR2J Antibody (Catalog# A11442). Tested in WB, ELISA applications. This antibody reacts with Human, Mouse.
Application	ELISA, WB
Clonality	Polyclonal
Formulation	PBS containing 50% glycerol, 0.5% BSA and 0.02% sodium azide.
Storage Instructions	Store at -20°C for one year. For short term storage and frequent use, store at 4°C for up to one month. Avoid repeated freeze-thaw cycles.
Host	Rabbit
Uniprot ID	P52435

Technical Details

Immunogen	A peptide derived from human RPB11. Immunogen sequence location: 24 - 73
Predicted Reactive Species	Bovine, Canine, Chicken, Primate, Sheep, Xenopus, Zebrafish
Isotype	Rabbit IgG
Form	Liquid
Concentration	0.5-1mg/ml, actual concentration vary by lot. Use suggested dilution ratio to decide dilution procedure.
Purification	The antibody was purified from rabbit antiserum by affinity-chromatography using immunogen.
Suggested Dilutions	<p>Dilute the sample so that the expected range of concentrations fall within the detection range of this kit.</p> <p>If the expected range of concentration is unknown, a pilot test should be conducted to decide the optimal dilution ratio for your samples.</p> <p>Some PubMed article(s) citing the expression level of this target are as follows:</p> <p>Boster Bio's internal QC testing used:</p> <p>Western Blot, 1:500 - 1:1000</p> <p>ELISA, 1:10000</p>

Anti-RPB11 POLR2J Antibody (A11442) Images



Western blot analysis of the lysates from HeLa cells using RPB11 antibody.

Submit a product review to Biocompare.com

Submit a review of this product to Biocompare.com to receive a \$20 Amazon.com giftcard! Your reviews help your fellow scientists make the right decisions. Thank you for your contribution.



Anti-RPB11 POLR2J Antibody