

Anti-LRRTM2 Antibody

Catalog Number: A11486

About LRRTM2

The Leucine-rich repeat transmembrane neuronal proteins (LRRTMs) are differentially expressed in the nervous system and were recently found to instruct presynaptic and mediate postsynaptic glutamatergic differentiation, with LRRTM1 and LRRTM2 most potent at inducing presynaptic differentiation. Each LRRTM protein is a type I transmembrane containing ten extracellular leucine-rich repeats and a short intracellular tail and has a developmentally regulated pattern distinct from all others. LRRTM2 interacts with PSD-95 and regulates the surface expression of AMPA receptors. LRRTM2 also functions as a neurexin ligand, binding both Neurexin 1-alpha and -beta, suggesting that LRRTM2-Neurexin1 interaction plays a critical role in regulatory excitatory synapse development.

Overview

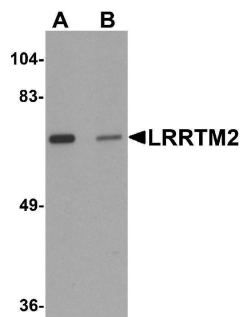
Product Name	Anti-LRRTM2 Antibody
Reactive Species	Human, Mouse, Rat
Description	Boster Bio Anti-LRRTM2 Antibody (Catalog # A11486). Tested in ELISA, WB, IHC-P, IF applications. This antibody reacts with Human, Mouse, Rat.
Application	ELISA, IF, IHC-P, WB
Clonality	Polyclonal
Formulation	LRRTM2 Antibody is supplied in PBS containing 0.02% sodium azide.
Storage Instructions	LRRTM2 antibody can be stored at 4°C for three months and -20°C, stable for up to one year. Avoid repeated freeze-thaw cycles. Antibodies should not be exposed to prolonged high temperatures.
Host	Rabbit
Uniprot ID	O43300

Technical Details

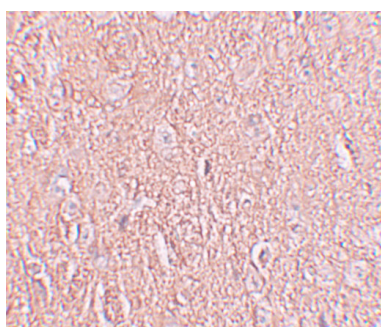
Immunogen	LRRTM2 antibody was raised against a 17 amino acid synthetic peptide near the carboxy terminus of human LRRTM2. The immunogen is located within the last 50 amino acids of LRRTM2.
Predicted Reactive Species	Rat
Cross Reactivity	LRRTM2 antibody is predicted to not cross-react with other LRRTM family members.
Isotype	IgG
Form	Liquid
Concentration	1 mg/mL

Purification	LRRTM2 Antibody is affinity chromatography purified via peptide column.
Suggested Dilutions	LRRTM2 antibody can be used for detection of LRRTM2 by Western blot at 1 ug/mL. Antibody can also be used for immunohistochemistry starting at 2.5 ug/mL. For immunofluorescence start at 20 ug/mL. Antibody validated: Western Blot in human samples; Immunohistochemistry in human samples and Immunofluorescence in human samples. All other applications and species not yet tested. Optimal dilutions for each application should be determined by the researcher.

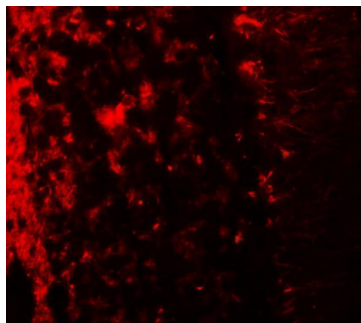
Anti-LRRTM2 Antibody (A11486) Images



Western blot analysis of LRRTM2 in SK-N-SH cell lysate with LRRTM2 antibody at 1 ug/mL in (A) the absence and (B) the presence of blocking peptide.



Immunohistochemistry of LRRTM2 in human brain tissue with LRRTM2 antibody at 2.5 ug/mL.



Immunofluorescence of LRRTM2 in human brain tissue with LRRTM2 antibody at 20 ug/mL.

Submit a product review to [Biocompare.com](https://www.biocompare.com)

Submit a review of this product to [Biocompare.com](https://www.biocompare.com) to receive a \$20 Amazon.com giftcard! Your reviews help your fellow scientists make the right decisions. Thank you for your contribution.



Anti-LRRTM2 Antibody

For Research Use Only. Not for use in diagnostic procedures.