

Anti-SH3RF2 Antibody

Catalog Number: A11489

About SH3RF2

Although the SH3 domain containing ring finger 2 protein (SH3RF2) has been identified as a marker of the nucleus accumbens in the human brain, little is known about this protein. Recent yeast two-hybrid experiments have shown that SH3RF2 associates with protein phosphatase 1 (PP1) and is expressed primarily in heart and testis tissue. Recombinant SH3RF2 enhanced PP1 enzymatic activity and antagonized the ability of phospho-inhibitor-1 or -2 to inhibit PP1, suggesting that SH3RF2 may play a role working with PP1 in cardiac functions.

Overview

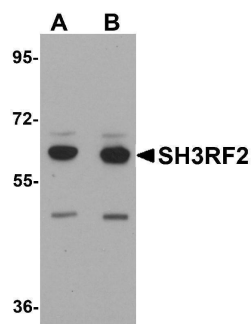
Product Name	Anti-SH3RF2 Antibody
Reactive Species	Human, Mouse, Rat
Description	Boster Bio Anti-SH3RF2 Antibody (Catalog # A11489). Tested in ELISA, WB, IHC-P, IF applications. This antibody reacts with Human, Mouse, Rat.
Application	ELISA, IF, IHC-P, WB
Clonality	Polyclonal
Formulation	SH3RF2 Antibody is supplied in PBS containing 0.02% sodium azide.
Storage Instructions	SH3RF2 antibody can be stored at 4°C for three months and -20°C, stable for up to one year. Avoid repeated freeze-thaw cycles. Antibodies should not be exposed to prolonged high temperatures.
Host	Rabbit
Uniprot ID	Q8TEC5

Technical Details

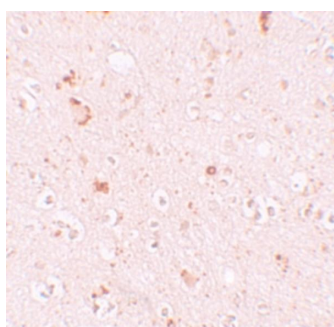
Immunogen	SH3RF2 antibody was raised against a 17 amino acid synthetic peptide near the carboxy terminus of human SH3RF2. The immunogen is located within the last 50 amino acids of SH3RF2.
Predicted Reactive Species	Rat
Isotype	IgG
Form	Liquid
Concentration	1 mg/mL
Purification	SH3RF2 Antibody is affinity chromatography purified via peptide column.
Suggested Dilutions	SH3RF2 antibody can be used for detection of SH3RF2 by Western blot at 1 - 2 ug/mL. Antibody can also be used for immunohistochemistry starting at 10 ug/mL. For immunofluorescence start at 20 ug/mL.

Antibody validated: Western Blot in mouse samples; Immunohistochemistry in human samples and Immunofluorescence in human samples. All other applications and species not yet tested. Optimal dilutions for each application should be determined by the researcher.

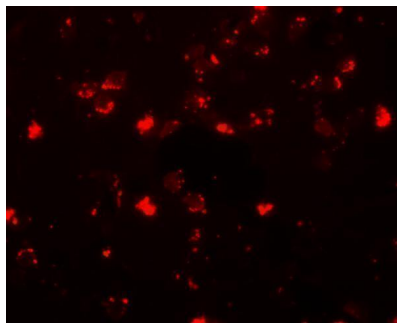
Anti-SH3RF2 Antibody (A11489) Images



Western blot analysis of SH3RF2 in 3T3 cell lysate with SH3RF2 antibody at (A) 1 and (B) 2 ug/mL.



Immunohistochemistry of SH3RF2 in human brain tissue with SH3RF2 antibody at 10 ug/mL.



Immunofluorescence of SH3RF2 in human brain tissue with SH3RF2 antibody at 20 ug/mL.

Submit a product review to [Biocompare.com](https://www.biocompare.com)

Submit a review of this product to [Biocompare.com](https://www.biocompare.com) to receive a \$20 Amazon.com giftcard! Your reviews help your fellow scientists make the right decisions. Thank you for your contribution.



Anti-SH3RF2 Antibody

For Research Use Only. Not for use in diagnostic procedures.