

## Anti-G-protein coupled receptor 15 GPR15 Antibody

Catalog Number: A11493

### About GPR15

Human immunodeficiency virus (HIV) and related viruses require coreceptors to infect target cells. Some G protein-coupled receptors including CCR5, CXCR4, CCR3, CCR2b and CCR8 in the chemokine receptor family, and four other molecules GPR15, STRL33, GPR1 and V28 were recently identified as HIV coreceptors. GPR15, also known as BOB, is a G protein-coupled receptor that serves as coreceptor for the simian immunodeficiency virus (SIV), and for strains of HIV-2 and M-tropic HIV-1.

### Overview

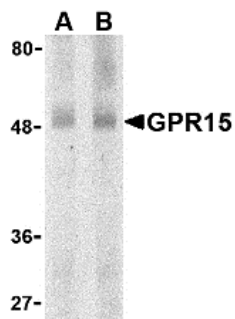
Product Name	Anti-G-protein coupled receptor 15 GPR15 Antibody
Reactive Species	Human, Mouse, Rat
Description	Boster Bio Anti-G-protein coupled receptor 15 GPR15 Antibody (Catalog # A11493). Tested in ELISA, WB, ICC applications. This antibody reacts with Human, Mouse, Rat.
Application	ELISA, ICC, WB
Clonality	Polyclonal
Formulation	GPR15 Antibody is supplied in PBS containing 0.02% sodium azide.
Storage Instructions	GPR15 antibody can be stored at 4°C for three months and -20°C, stable for up to one year. Avoid repeated freeze-thaw cycles. Antibodies should not be exposed to prolonged high temperatures.
Host	Rabbit
Uniprot ID	U34806

### Technical Details

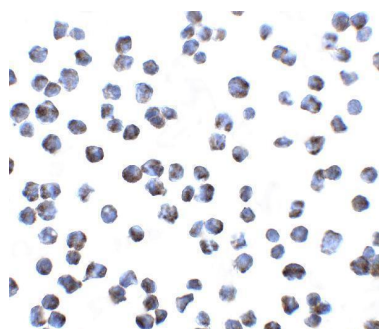
Immunogen	GPR15 antibody was raised against a peptide corresponding to 16 amino acids near the amino terminus of human GPR15. The immunogen is located within the first 50 amino acids of GPR15.
Predicted Reactive Species	Rat
Isotype	IgG
Form	Liquid
Concentration	1 mg/mL
Purification	GPR15 Antibody is affinity chromatography purified via peptide column.
Suggested Dilutions	GPR15 antibody can be used for detection of GPR15 by Western blot at 0.5 - 1 ug/mL. Antibody can also be used for immunocytochemistry starting at 5 ug/mL. Antibody validated: Western Blot in human samples and Immunocytochemistry in human samples.

All other applications and species not yet tested. Optimal dilutions for each application should be determined by the researcher.

## Anti-G-protein coupled receptor 15 GPR15 Antibody (A11493) Images



Western blot analysis of GPR15 in human spleen lysate with GPR15 antibody at (A) 0.5 and (B) 1 ug/mL.



Immunocytochemistry of GPR15 in A431 cells with GPR15 antibody at 5 ug/ml.

### Submit a product review to [Biocompare.com](https://www.biocompare.com)

Submit a review of this product to [Biocompare.com](https://www.biocompare.com) to receive a \$20 Amazon.com giftcard! Your reviews help your fellow scientists make the right decisions. Thank you for your contribution.



Anti-G-protein coupled receptor 15 GPR15 Antibody

For Research Use Only. Not for use in diagnostic procedures.