

## Anti-ZGPAT Antibody

Catalog Number: A11540

### About ZGPAT

The Zinc finger CCCH-type with G patch domain-containing protein (ZGPAT), is a transcriptional repressor that regulates several cellular pathways including EGFR pathways that are involved in cell proliferation, migration and survival. ZGPAT recruits the Mi-2/NuRD complex and represses the expression of EGFR. ZGPAT is down-regulated in breast carcinomas and its expression is negatively correlated with that of EGFR, suggesting that it may be a potential target for breast cancer therapy. Multiple isoforms of ZGPAT are known to exist, including sZIP, which binds to the Mi-2/NuRD complex but lacks the DNA binding component of full-length ZGPAT, thereby antagonizing transcription repression and growth inhibition by ZGPAT.

### Overview

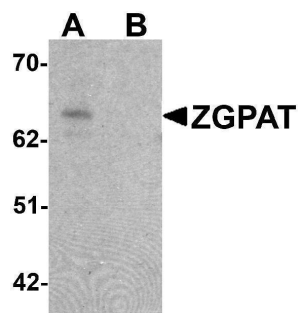
|                      |  |
|----------------------|--|
| Product Name         | Anti-ZGPAT Antibody  |
| Reactive Species     | Human  |
| Description          | Boster Bio Anti-ZGPAT Antibody (Catalog # A11540). Tested in ELISA, WB, IF applications. This antibody reacts with Human.  |
| Application          | ELISA, IF, WB  |
| Clonality            | Polyclonal   |
| Formulation          | ZGPAT Antibody is supplied in PBS containing 0.02% sodium azide.   |
| Storage Instructions | ZGPAT antibody can be stored at 4°C for three months and -20°C, stable for up to one year. Avoid repeated freeze-thaw cycles. Antibodies should not be exposed to prolonged high temperatures. |
| Host                 | Chicken  |
| Uniprot ID           | Q8N5A5   |

### Technical Details

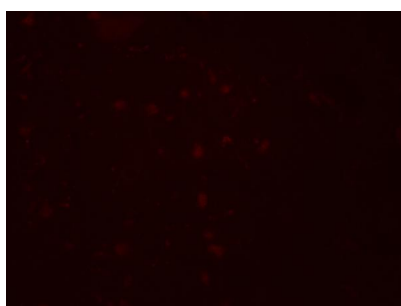
|                            |   |
|----------------------------|---|
| Immunogen                  | ZGPAT antibody was raised against a 15 amino acid synthetic peptide near the carboxy terminus of human ZGPAT. The immunogen is located within the last 50 amino acids of ZGPAT. |
| Predicted Reactive Species | Bovine, Sheep   |
| Cross Reactivity           | Multiple isoforms of ZGPAT are known to exist.  |
| Isotype                    | IgY   |
| Form                       | Liquid  |
| Concentration              | 1 mg/mL   |

|                     |   |
|---------------------|---|
| Purification        | ZGPAT Antibody is affinity chromatography purified via peptide column.  |
| Suggested Dilutions | ZGPAT antibody can be used for detection of ZGPAT by Western blot at 1 ug/mL. Antibody can also be used for immunofluorescence starting at 20 ug/mL. For immunofluorescence start at 20 ug/mL. Antibody validated: Western Blot in human samples and Immunofluorescence in human samples. All other applications and species not yet tested. Optimal dilutions for each application should be determined by the researcher. |

## Anti-ZGPAT Antibody (A11540) Images



Western blot analysis of ZGPAT in SK-N-SH cell lysate with ZGPAT antibody at 1 ug/mL in (A) the absence and (B) the presence of blocking peptide.



Immunofluorescence of ZGPAT in human brain cells with ZGPAT antibody at 20 ug/mL.

### Submit a product review to Biocompare.com

Submit a review of this product to Biocompare.com to receive a \$20 Amazon.com giftcard! Your reviews help your fellow scientists make the right decisions. Thank you for your contribution.



Anti-ZGPAT Antibody

For Research Use Only. Not for use in diagnostic procedures.