

Anti-CLEC2A Antibody

Catalog Number: A11588

About CLEC2A

CLEC2A (C-type lectin domain family 2 member A), also known as PILAR (proliferation-induced lymphocyte-associated receptor) is involved in modulating T-cell expansion. It is a 32 kDa single-pass type II membrane protein that contains one C-type lectin domain in its extracellular region and belongs to the CTL/CTLD superfamily. CLEC2A is mainly expressed in skin and highly expressed in CD8(+), B lymphocytes and naive CD4(+) T cells. Manipulation of CLEC2A signaling may be important for treatment of autoimmune diseases and cancer.

Overview

Product Name	Anti-CLEC2A Antibody
Reactive Species	Human
Description	Boster Bio Anti-CLEC2A Antibody (Catalog # A11588). Tested in ELISA, WB, IF applications. This antibody reacts with Human.
Application	ELISA, IF, WB
Clonality	Polyclonal
Formulation	CLEC2A Antibody is supplied in PBS containing 0.02% sodium azide.
Storage Instructions	CLEC2A antibody can be stored at 4°C for three months and -20°C, stable for up to one year. Avoid repeated freeze-thaw cycles. Antibodies should not be exposed to prolonged high temperatures.
Host	Rabbit
Uniprot ID	Q6UVW9

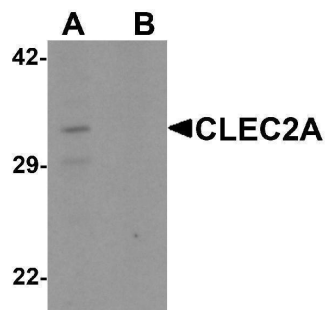
Technical Details

Immunogen	CLEC2A antibody was raised against a 16 amino acid synthetic peptide near the amino terminus of human CLEC2A. The immunogen is located within the first 50 amino acids of CLEC2A.
Predicted Reactive Species	Bovine
Cross Reactivity	CLEC2A antibody is human specific. Two alternatively spliced transcript variants have been observed.
Isotype	IgG
Form	Liquid
Concentration	1 mg/mL
Purification	CLEC2A Antibody is affinity chromatography purified via peptide column.

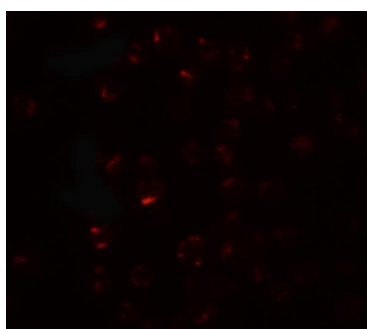
Suggested Dilutions

CLEC2A antibody can be used for detection of CLEC2A by Western blot at 1 ug/mL. For immunofluorescence start at 20 ug/mL.
Antibody validated: Western Blot in human samples and Immunofluorescence in human samples. All other applications and species not yet tested. Optimal dilutions for each application should be determined by the researcher.

Anti-CLEC2A Antibody (A11588) Images



Western blot analysis of CLEC2A in K562 cell lysate with CLEC2A antibody at 1 ug/ml in (A) the absence and (B) the presence of blocking peptide.



Immunofluorescence of CLEC2A in K562 cells with CLEC2A antibody at 20 ug/mL.

Submit a product review to [Biocompare.com](https://www.biocompare.com)

Submit a review of this product to [Biocompare.com](https://www.biocompare.com) to receive a \$20 Amazon.com giftcard! Your reviews help your fellow scientists make the right decisions. Thank you for your contribution.



Anti-CLEC2A Antibody

For Research Use Only. Not for use in diagnostic procedures.