

## Anti-Cdc37L1 (D153) Antibody

Catalog Number: A11615

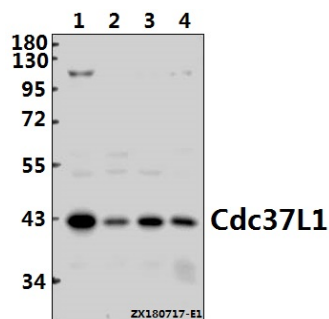
### Overview

Product Name	Anti-Cdc37L1 (D153) Antibody
Reactive Species	Human
Description	Boster Bio Anti-Cdc37L1 (D153) Antibody catalog # A11615. Tested in WB applications. This antibody reacts with Human.
Application	WB
Clonality	Polyclonal
Formulation	Rabbit IgG, 1mg/ml in PBS with 0.02% sodium azide, 50% glycerol, pH7.2
Storage Instructions	Store at -20°C for one year. For short term storage and frequent use, store at 4°C for up to one month. Avoid repeated freeze-thaw cycles.
Host	Rabbit
Uniprot ID	Q7L3B6

### Technical Details

Immunogen	Synthetic peptide, corresponding to amino acids 122-174 of Human Cdc37L1.
Isotype	IgG
Form	Liquid
Concentration	1 mg/ml
Purification	The antibody was affinity-purified from rabbit antiserum by affinity-chromatography using epitope-specific immunogen and the purity is > 95% (by SDS-PAGE).
Suggested Dilutions	WB: 1:500-1:1000

## Anti-Cdc37L1 (D153) Antibody (A11615) Images



Western blot (WB) analysis of Cdc37L1 (D153) polyclonal antibody at 1:500 dilution Lane1:HEK293T whole cell lysate(40ug) Lane2:L02 whole cell lysate(40ug) Lane3:A549 whole cell lysate(20ug) Lane4:EC9706 whole cell lysate(20ug)

### Submit a product review to Biocompare.com

Submit a review of this product to Biocompare.com to receive a \$20 Amazon.com giftcard! Your reviews help your fellow scientists make the right decisions. Thank you for your contribution.



Anti-Cdc37L1 (D153) Antibody

For Research Use Only. Not for use in diagnostic procedures.