

Anti-REEP2 Antibody

Catalog Number: A11618

About REEP2

Mammalian odorant receptors require accessory proteins such as RTP1 and RTP2 for functional cell surface expression. Receptor expression-enhancing protein (REEP) family members are transmembrane proteins which interact with odorant receptor proteins and may enhance the odorant receptor responses to odorants. Recently studies have shown other chemosensory receptors such as bitter taste receptors are also influenced by RTP and REEP family members.

Overview

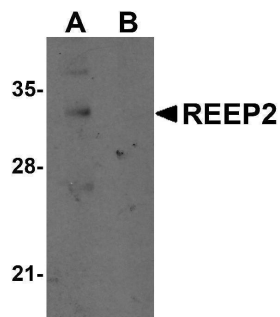
Product Name	Anti-REEP2 Antibody
Reactive Species	Human, Mouse, Rat
Description	Boster Bio Anti-REEP2 Antibody (Catalog # A11618). Tested in ELISA, WB, IHC-P, IF applications. This antibody reacts with Human, Mouse, Rat.
Application	ELISA, IF, IHC-P, WB
Clonality	Polyclonal
Formulation	REEP2 Antibody is supplied in PBS containing 0.02% sodium azide.
Storage Instructions	REEP2 antibody can be stored at 4°C for three months and -20°C, stable for up to one year. Avoid repeated freeze-thaw cycles. Antibodies should not be exposed to prolonged high temperatures.
Host	Rabbit
Uniprot ID	Q9BRK0

Technical Details

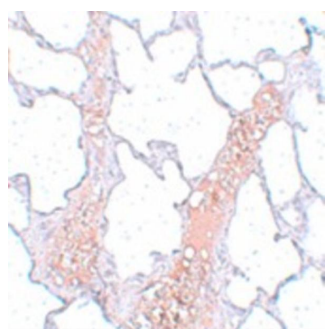
Immunogen	REEP2 antibody was raised against a 15 amino acid synthetic peptide near the center of human REEP2. The immunogen is located within amino acids 150 - 200 of REEP2.
Predicted Reactive Species	Bovine
Isotype	IgG
Form	Liquid
Concentration	1 mg/mL
Purification	REEP2 Antibody is affinity chromatography purified via peptide column.
Suggested Dilutions	REEP2 antibody can be used for detection of REEP2 by Western blot at 1 ug/mL. Antibody can also be used for immunohistochemistry starting at 5 ug/mL. For immunofluorescence start at 20 ug/mL. Antibody validated: Western Blot in mouse samples; Immunohistochemistry in rat samples and

Immunofluorescence in rat samples. All other applications and species not yet tested. Optimal dilutions for each application should be determined by the researcher.

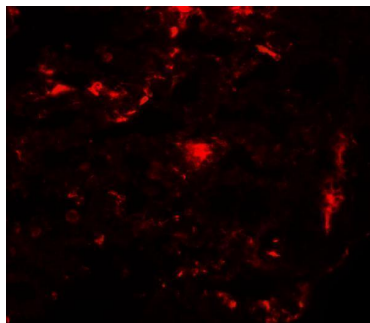
Anti-REEP2 Antibody (A11618) Images



Western blot analysis of REEP2 in mouse lung tissue lysate with REEP2 antibody at 1 ug/mL in (A) the absence and (B) the presence of blocking peptide.



Immunohistochemistry of REEP2 in rat lung tissue with REEP2 antibody at 5 ug/mL.



Immunofluorescence of REEP2 in rat lung tissue with REEP2 antibody at 20 ug/mL.

Submit a product review to [Biocompare.com](https://www.biocompare.com)

Submit a review of this product to [Biocompare.com](https://www.biocompare.com) to receive a \$20 Amazon.com giftcard! Your reviews help your fellow scientists make the right decisions. Thank you for your contribution.



Anti-REEP2 Antibody

For Research Use Only. Not for use in diagnostic procedures.