

Anti-SDHAF1 Antibody

Catalog Number: A11628

About SDHAF1

SDHAF1 (Succinate dehydrogenase complex assembly factor 1) is one of the subunits of the succinate dehydrogenase (SDH) complex (or complex II) of the mitochondrial respiratory chain. SDHAF1 resides in the mitochondria, and is essential for SDH assembly, but does not physically associate with the complex in vivo. Mutations in this gene are associated with SDH-defective infantile leukoencephalopathy (mitochondrial complex II deficiency). Unlike the related protein SDHAF2, SDHAF1 is not thought to be a tumor suppressor.

Overview

Product Name	Anti-SDHAF1 Antibody
Reactive Species	Human, Mouse
Description	Boster Bio Anti-SDHAF1 Antibody (Catalog # A11628). Tested in ELISA, WB, ICC, IF applications. This antibody reacts with Human, Mouse.
Application	ELISA, IF, ICC, WB
Clonality	Polyclonal
Formulation	SDHAF1 Antibody is supplied in PBS containing 0.02% sodium azide.
Storage Instructions	SDHAF1 antibody can be stored at 4°C for three months and -20°C, stable for up to one year. Avoid repeated freeze-thaw cycles. Antibodies should not be exposed to prolonged high temperatures.
Host	Rabbit
Uniprot ID	A6NFY7

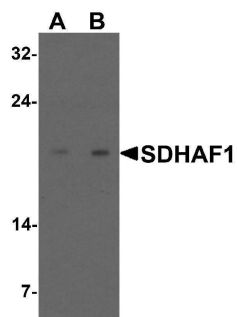
Technical Details

Immunogen	SDHAF1 antibody was raised against an 18 amino acid synthetic peptide near the carboxy terminus of human SDHAF1. The immunogen is located within the last 50 amino acids of SDHAF1.
Predicted Reactive Species	Bovine
Cross Reactivity	SDHAF1 antibody is predicted to not cross-react with other SDHAF protein family members.
Isotype	IgG
Form	Liquid
Concentration	1 mg/mL
Purification	SDHAF1 Antibody is affinity chromatography purified via peptide column.
Suggested Dilutions	SDHAF1 antibody can be used for detection of SDHAF1 by Western blot at 1 - 2 ug/mL. Antibody

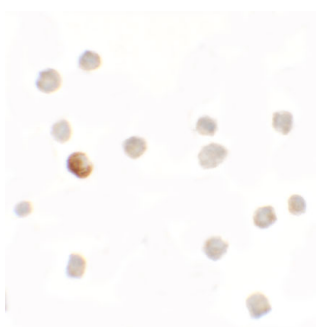
can also be used for immunocytochemistry starting at 5 ug/mL. For immunofluorescence start at 5 ug/mL.

Antibody validated: Western Blot in mouse samples; Immunocytochemistry in mouse samples and Immunofluorescence in mouse samples. All other applications and species not yet tested. Optimal dilutions for each application should be determined by the researcher.

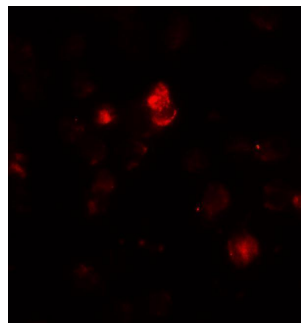
Anti-SDHAF1 Antibody (A11628) Images



Western blot analysis of SDHAF1 in 3T3 cell lysate with SDHAF1 antibody at (A) 1 and (B) 2 ug/mL.



Immunocytochemistry of SDHAF1 in 3T3 cells with SDHAF1 antibody at 5 ug/mL.



Immunofluorescence of SDHAF1 in 3T3 cells with SDHAF1 antibody at 20 ug/mL.

Submit a product review to [Biocompare.com](https://www.biocompare.com)

Submit a review of this product to [Biocompare.com](https://www.biocompare.com) to receive a \$20 Amazon.com giftcard! Your reviews help your fellow scientists make the right decisions. Thank you for your contribution.



Anti-SDHAF1 Antibody

For Research Use Only. Not for use in diagnostic procedures.