

## Anti-MRPL23 Antibody

Catalog Number: A11634

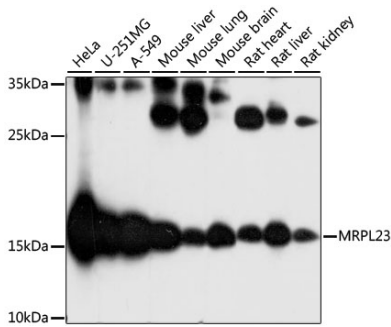
### Overview

|                      |  |
|----------------------|--|
| Product Name         | Anti-MRPL23 Antibody   |
| Reactive Species     | Human, Mouse, Rat  |
| Description          | Boster Bio Anti-MRPL23 Antibody catalog # A11634. Tested in WB,IHC,ICC/IF applications. This antibody reacts with Human,Mouse,Rat.         |
| Application          | IF, IHC, ICC, WB   |
| Clonality            | Polyclonal   |
| Formulation          | Rabbit IgG, 1mg/ml in PBS with 0.02% sodium azide, 50% glycerol, pH7.2   |
| Storage Instructions | Store at -20°C for one year. For short term storage and frequent use, store at 4°C for up to one month. Avoid repeated freeze-thaw cycles. |
| Host                 | Rabbit   |
| Uniprot ID           | Q16540   |

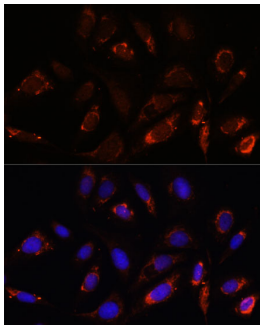
### Technical Details

|                     |   |
|---------------------|---|
| Immunogen           | Recombinant fusion protein of human MRPL23(NP_066957.3).  |
| Isotype             | IgG   |
| Form                | Liquid  |
| Concentration       | 1 mg/ml   |
| Purification        | The antibody was affinity-purified from rabbit antiserum by affinity-chromatography using epitope-specific immunogen and the purity is > 95% (by SDS-PAGE). |
| Suggested Dilutions | WB: 1:500-1:2000<br>IHC: 1:50-1:200<br>ICC/IF: 1:50-1:200   |

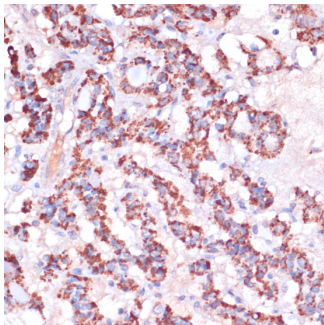
## Anti-MRPL23 Antibody (A11634) Images



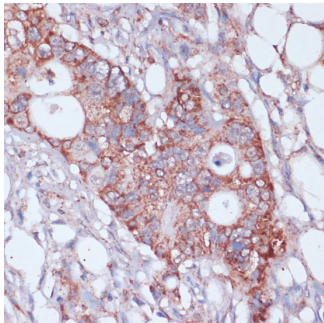
Western blot analysis of extracts of various cell lines, using MRPL23 antibody at 1:1000 dilution. Secondary antibody: HRP Goat Anti-Rabbit IgG at 1:10000 dilution. Lysates/proteins: 25ug per lane. Blocking buffer: 3% nonfat dry milk in TBST. Detection: ECL Basic Kit. Exposure time: 1s.



Immunofluorescence analysis of U-2 OS cells using MRPL23 antibody at dilution of 1:100. Blue: DAPI for nuclear staining.



Immunohistochemistry of paraffin-embedded human thyroid cancer using MRPL23 antibody at dilution of 1:100. Perform microwave antigen retrieval with 10 mM PBS buffer pH 7.2 before commencing with IHC staining protocol.



Immunohistochemistry of paraffin-embedded human colon carcinoma using MRPL23 antibody at dilution of 1:100. Perform microwave antigen retrieval with 10 mM PBS buffer pH 7.2 before commencing with IHC staining protocol.

**Submit a product review to Biocompare.com**

Submit a review of this product to Biocompare.com to receive a \$20 Amazon.com giftcard! Your reviews help your fellow scientists make the right decisions. Thank you for your contribution.



**Anti-MRPL23 Antibody**

For Research Use Only. Not for use in diagnostic procedures.