

## Anti-CENP-Q Antibody

Catalog Number: A11703

### About CENPQ

This antibody is suitable for Cancer, Immunology and Nuclear Signaling research. Cenp-Q (also known as centromere protein Q or CENPQ) is a nuclear/centromeric protein that is one of the critical components that constitutes the CENP-O complex at the kinetochores and appears to stabilize PBIP1/CENP-U(50)/MLF1IP in the complex. This complex is important for proper recruitment of polo-like kinase 1 (Plk1) to the mitotic kinetochores. A failure in this process results in improper microtubule attachment to the kinetochores and chromosome missegregation that ultimately lead to aneuploidy.

### Overview

Product Name	Anti-CENP-Q Antibody
Reactive Species	Human
Description	Boster Bio Anti-CENP-Q Antibody (Catalog # A11703). Tested in ELISA, IF, WB applications. This antibody reacts with Human.
Application	ELISA, IF, WB
Clonality	Polyclonal
Formulation	0.02 M Potassium Phosphate, 0.15 M Sodium Chloride, pH 7.2, 0.01% (w/v) Sodium Azide
Storage Instructions	Store vial at -20°C prior to opening. Aliquot contents and freeze at -20°C or below for extended storage. Avoid cycles of freezing and thawing. Centrifuge product if not completely clear after standing at room temperature. This product is stable for several weeks at 4°C as an undiluted liquid. Dilute only prior to immediate use. Expiration date is one (1) year from date of opening. (Ship on dry ice.)
Host	Rabbit
Uniprot ID	Q7L2Z9

### Technical Details

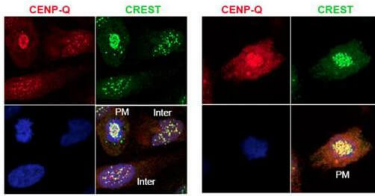
Immunogen	This protein A purified antibody was prepared from whole rabbit serum produced by repeated immunizations with full-length human CENP-Q recombinant protein.
Predicted Reactive Species	Chimpanzee, Drosophila, Macaque
Isotype	IgG
Form	Liquid (sterile filtered)
Concentration	1.15 mg/mL by UV absorbance at 280 nm
Purification	This product was protein A purified from monospecific antiserum by immunoaffinity

chromatography using protein A coupled to agarose beads. This antibody is specific for human CENP-Q protein. A BLAST analysis of the full length sequence was used to suggest partial cross-reactivity with CENP-Q based on the following percentage homologies: macaque (91%), horse (76%), bovine (74%), dog (73%), swine (71%), mouse (65%) and rat (60%). Cross-reactivity with CENP-Q from other sources has not been determined.

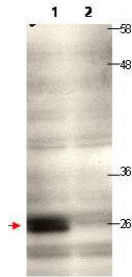
**Suggested Dilutions**

ELISA: 1:5,000 - 1:20,000  
IF Microscopy: User optimized  
WB: 1:100 - 1:500  
This protein A purified antibody has been tested for use in ELISA, immunofluorescence microscopy and western blotting. Specific conditions for reactivity should be optimized by the end user. Expect a band approximately 26-31 kDa in size corresponding to human CENP-Q by western blotting in the appropriate cell lysate or extract.

## Anti-CENP-Q Antibody (A11703) Images



Immunofluorescence microscopy using Boster's protein A purified anti-CENP-Q antibody shows detection of endogenous CENP-Q in HeLa whole cell lysate. Primary antibody was used at 1:100 followed by secondary antibody diluted 1:150. Red punctate anti-CENP-Q signal colocalizes in overlay images with green punctate anti-CREST signals at the kinetochores (attached points of sister chromatids). Visible are colocalized CENP-Q and CREST signal at various stages of the cell cycle as indicated from interphase to the end of mitosis. Nuclei are counter stained with bisbenzimidide. Personal Communication, Kyung S. Lee, CCR-NCI, Bethesda, MD



Western blot using Boster's protein A purified anti-CENP-Q antibody shows detection of endogenous CENP-Q in a HeLa whole cell lysate (lane 1, arrowhead). The blot was incubated for 1.5 hours at room temperature using the primary antibody diluted to 0.5 $\mu$ g/mL, followed by washes and incubation with to the secondary antibody. Lane 1: Lysates from HeLa cells transfected with control sh-virus wherein the expression of CENP-Q is expected to not to alter. Lane 2: Lysates from HeLa cells transfected with Cenp-Q sh-virus wherein the expression of CENP-Q is knocked down significantly to a level where it is not being detected at all under the tested condition/WB exposure time. Personal Communication, Kyung S. Lee, CCR-NCI, Bethesda, MD.

### Submit a product review to [Biocompare.com](https://www.biocompare.com)

Submit a review of this product to [Biocompare.com](https://www.biocompare.com) to receive a \$20 Amazon.com giftcard! Your reviews help your fellow scientists make the right decisions. Thank you for your contribution.



Anti-CENP-Q Antibody

For Research Use Only. Not for use in diagnostic procedures.