

Anti-R Cgref1 Antibody (C-term)

Catalog Number: A11706-2

About Cgref1

Mediates cell-cell adhesion in a calcium-dependent manner. Able to inhibit growth in several cell lines.

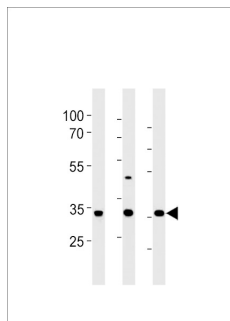
Overview

Product Name	Anti-R Cgref1 Antibody (C-term)
Reactive Species	Rat
Description	Boster Bio Anti-R Cgref1 Antibody (C-term) (Catalog # A11706-2). Tested in IHC-P, WB application(s). This antibody reacts with Rat.
Application	IHC-P, WB
Clonality	Polyclonal
Formulation	Purified polyclonal antibody supplied in PBS with 0.09% (W/V) sodium azide.
Storage Instructions	Maintain refrigerated at 2-8°C for up to 2 weeks. For long-term storage, store at -20°C in small aliquots to prevent freeze-thaw cycles.
Host	Rabbit
Uniprot ID	P97586

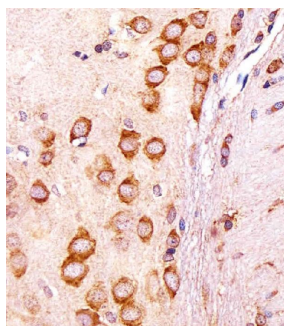
Technical Details

Immunogen	This RAT Cgref1 antibody is generated from rabbits immunized with a KLH conjugated synthetic peptide between 220-248 amino acids from the C-terminal region of rat Cgref1.
Predicted Reactive Species	Bovine, Mouse
Isotype	Rabbit IgG
Purification	This antibody is purified through a protein A column, followed by peptide affinity purification.
Suggested Dilutions	WB: 1:1000 IHC-P: 1:25

Anti-R Cgref1 Antibody (C-term) (A11706-2) Images



RAT Cgref1 Antibody (C-term) western blot analysis in rat liver, stomach and testis tissue lysates (35ug/lane). This demonstrates the RAT Cgref1 antibody detected the RAT Cgref1 protein (arrow).



Immunohistochemical analysis of paraffin-embedded R. brain section using R Cgref1 Antibody (C-term). A11706-2 was diluted at 1:25 dilution. A undiluted biotinylated goat polyvalent antibody was used as the secondary, followed by DAB staining.

Submit a product review to [Biocompare.com](https://www.biocompare.com)

Submit a review of this product to [Biocompare.com](https://www.biocompare.com) to receive a \$20 Amazon.com giftcard! Your reviews help your fellow scientists make the right decisions. Thank you for your contribution.



Anti-R Cgref1 Antibody (C-term)

For Research Use Only. Not for use in diagnostic procedures.