

## Anti-DEPDC1B Antibody

Catalog Number: A11735

### About DEPDC1B

The DEP domain-containing 1B (DEPDC1B) protein was initially identified as a radiation response biomarker in human lymphoblastoid cell lines (1). Like the related protein DEPDC1A, expression of DEPDC1B correlates with a poor prognosis in cancer patients (2,3). Studies have shown that DEPDC1B levels are upregulated in non-small cell lung cancer (NSCLC) and have an inverse correlation with patient survival. Ectopic expression of DEPDC1B in NSCLC activated Wnt/B-catenin signaling and enhanced cell migration and invasion while silencing DEPDC1B expression suppressed these traits (2).

### Overview

Product Name	Anti-DEPDC1B Antibody
Reactive Species	Human
Description	Boster Bio Anti-DEPDC1B Antibody (Catalog # A11735). Tested in ELISA, WB, IHC-P applications. This antibody reacts with Human.
Application	ELISA, IHC-P, WB
Clonality	Polyclonal
Formulation	DEPDC1B antibody is supplied in PBS containing 0.02% sodium azide.
Storage Instructions	DEPDC1B antibody can be stored at 4°C for three months and -20°C, stable for up to one year.
Host	Rabbit
Uniprot ID	Q8WUY9

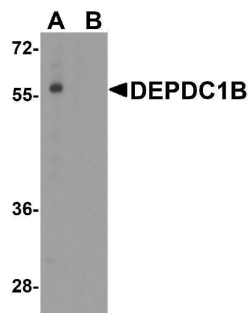
### Technical Details

Immunogen	DEPDC1B antibody was raised against a 19 amino acid peptide near the carboxy terminus of human DEPDC1B. The immunogen is located within the last 50 amino acids of DEPDC1B.
Predicted Reactive Species	Chicken, Mouse
Cross Reactivity	DEPDC1B antibody is human specific. At least two isoforms are known to exist; this antibody will only detect the largest isoform. DEPDC1B antibody is predicted to not cross-react with DEPDC1A.
Isotype	IgG
Form	Liquid
Concentration	1 mg/mL
Purification	DEPDC1B antibody is affinity chromatography purified via peptide column.

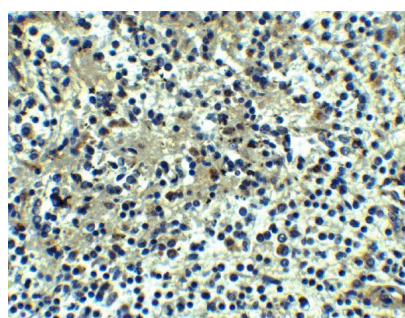
Suggested Dilutions

DEPDC1B antibody can be used for detection of DEPDC1B by Western blot at 1 - 2 ug/ml. Antibody can also be used for immunohistochemistry starting at 5 ug/mL.  
Antibody validated: Western Blot in human samples and Immunohistochemistry in human samples.  
All other applications and species not yet tested. Optimal dilutions for each application should be determined by the researcher.

## Anti-DEPDC1B Antibody (A11735) Images



Western blot analysis of DEPDC1B in K562 cell lysate with DEPDC1B antibody at 1 ug/ml in (A) the absence and (B) the presence of blocking peptide.



Immunohistochemistry of DEPDC1B in human spleen tissue with DEPDC1B antibody at 5 ug/ml.

### Submit a product review to Biocompare.com

Submit a review of this product to Biocompare.com to receive a \$20 Amazon.com giftcard! Your reviews help your fellow scientists make the right decisions. Thank you for your contribution.



Anti-DEPDC1B Antibody

For Research Use Only. Not for use in diagnostic procedures.