

## Anti-PSMD12 (I186) Antibody

Catalog Number: A11756-1

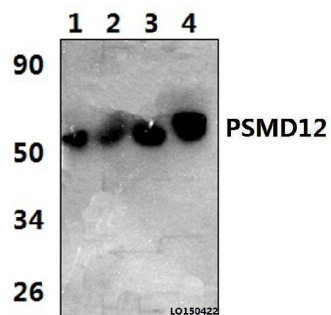
### Overview

Product Name	Anti-PSMD12 (I186) Antibody
Reactive Species	Human, Mouse, Rat
Description	Boster Bio Anti-PSMD12 (I186) Antibody catalog # A11756-1. Tested in WB,IHC applications. This antibody reacts with Human,Mouse,Rat.
Application	IHC, WB
Clonality	Polyclonal
Formulation	Rabbit IgG, 1mg/ml in PBS with 0.02% sodium azide, 50% glycerol, pH7.2
Storage Instructions	Store at -20°C for one year. For short term storage and frequent use, store at 4°C for up to one month. Avoid repeated freeze-thaw cycles.
Host	Rabbit
Uniprot ID	O00232

### Technical Details

Immunogen	Synthetic peptide, corresponding to amino acids 161-210 of Human PSMD12.
Isotype	IgG
Form	Liquid
Concentration	1 mg/ml
Purification	The antibody was affinity-purified from rabbit antiserum by affinity-chromatography using epitope-specific immunogen and the purity is > 95% (by SDS-PAGE).
Suggested Dilutions	WB: 1:500-1:1000 IHC: 1:50-1:200

## Anti-PSMD12 (I186) Antibody (A11756-1) Images



blot (WB) analysis of PSMD12 (I186) polyclonal antibody at 1:1000 dilution Lane1:L02 whole cell lysate(30ug) Lane2:SGC7901 whole cell lysate(30ug) Lane3:The Embryo tissue lysate of Mouse(40ug) Lane4:C6 whole cell lysate(40ug)

### Submit a product review to Biocompare.com

Submit a review of this product to Biocompare.com to receive a \$20 Amazon.com giftcard! Your reviews help your fellow scientists make the right decisions. Thank you for your contribution.



Anti-PSMD12 (I186) Antibody

For Research Use Only. Not for use in diagnostic procedures.