

Anti-BAP29 BCAP29 Antibody

Catalog Number: A11769

About BCAP29

Bap29 and the related protein Bap31 are endoplasmic reticulum (ER) and ER-vesicle membrane proteins and members of the B-cell receptor-associated protein family. These two proteins are highly homologous and can form homo- and heterodimers. Both Bap29 and Bap31 interact with membrane-bound immunoglobulins (mIgs), such as IgM and IgD, which with Ig-alpha/Ig-beta heterodimers form B cell antigen receptors. Binding of the Bap29/Bap31 heterodimer correlates with the ER retention of non-Ig-alpha/Ig-beta bound mlg complexes, suggesting that Bap29 and Bap31 may act as chaperones transmembrane regions of various proteins. Bap29 possesses multiple isoforms.

Overview

Product Name	Anti-BAP29 BCAP29 Antibody
Reactive Species	Human, Mouse, Rat
Description	Boster Bio Anti-BAP29 BCAP29 Antibody (Catalog # A11769). Tested in ELISA, WB, IHC-P, IF applications. This antibody reacts with Human, Mouse, Rat.
Application	ELISA, IF, IHC-P, WB
Clonality	Polyclonal
Formulation	BAP29 Antibody is supplied in PBS containing 0.02% sodium azide.
Storage Instructions	BAP29 antibody can be stored at 4°C for three months and -20°C, stable for up to one year. Avoid repeated freeze-thaw cycles. Antibodies should not be exposed to prolonged high temperatures.
Host	Rabbit
Uniprot ID	Q9UHQ4

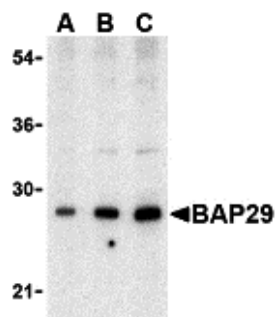
Technical Details

Immunogen	BAP29 antibody was raised against a 17 amino acid synthetic peptide from near the center of human Bap29 Bap29 antibody is specific for isoform a of Bap29. The immunogen is located within amino acids 130 - 180 of BAP29.
Predicted Reactive Species	Bovine
Isotype	IgG
Form	Liquid
Concentration	1 mg/mL
Purification	BAP29 Antibody is affinity chromatography purified via peptide column.
Suggested Dilutions	Bap29 antibody can be used for the detection of Bap29 by Western blot at 0.5 - 2 ug/mL. Antibody

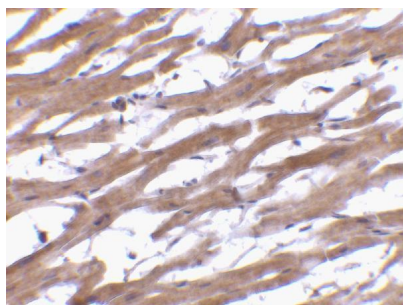
can also be used for immunohistochemistry starting at 10 ug/mL. For immunofluorescence start at 20 ug/mL.

Antibody validated: Western Blot in human samples; Immunohistochemistry in human samples and Immunofluorescence in human samples. All other applications and species not yet tested. Optimal dilutions for each application should be determined by the researcher.

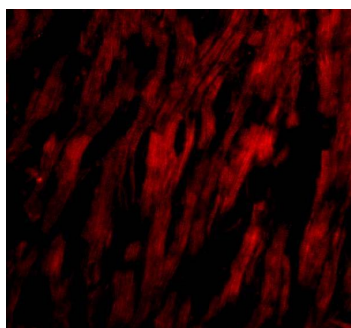
Anti-BAP29 BCAP29 Antibody (A11769) Images



Western blot analysis of Bap29 in human heart tissue lysate with Bap29 antibody at (A) 0.5, (B) 1 and (C) 2ug/mL.



Immunohistochemistry of BAP29 in human heart tissue with BAP29 antibody at 10 ug/mL.



Immunofluorescence of BAP29 in Human Heart cells with BAP29 antibody at 20 ug/mL.

Submit a product review to [Biocompare.com](https://www.biocompare.com)

Submit a review of this product to [Biocompare.com](https://www.biocompare.com) to receive a \$20 Amazon.com giftcard! Your reviews help your fellow scientists make the right decisions. Thank you for your contribution.



Anti-BAP29 BCAP29 Antibody

For Research Use Only. Not for use in diagnostic procedures.