

Anti-MPEG1 Antibody Picoband®

Catalog Number: A11803-1

About MPEG1

Enables pore-forming activity and wide pore channel activity. Involved in antigen processing and presentation of exogenous peptide antigen via MHC class I; defense response to bacterium; and dendritic cell antigen processing and presentation. Acts upstream of or within antigen processing and presentation of exogenous peptide antigen via MHC class I, TAP-dependent. Located in phagocytic vesicle. Is active in endolysosome and phagocytic vesicle membrane. Is expressed in several structures, including blood vessel; central nervous system; genital tubercle; and retina outer nuclear layer. Human ortholog(s) of this gene implicated in primary immunodeficiency disease. Orthologous to human MPEG1 (macrophage expressed 1).

Overview

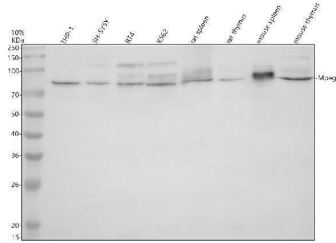
Product Name	Anti-MPEG1 Antibody Picoband®
Reactive Species	Human, Mouse, Rat
Description	Boster Bio Anti-MPEG1 Antibody Picoband® catalog # A11803-1. Tested in WB, Flow Cytometry, ELISA applications. This antibody reacts with Human, Mouse, Rat. The brand Picoband indicates this is a premium antibody that guarantees superior quality, high affinity, and strong signals with minimal background in Western blot applications. Only our best-performing antibodies are designated as Picoband, ensuring unmatched performance.
Application	ELISA, Flow Cytometry, WB
Clonality	Polyclonal
Formulation	Each vial contains 4 mg Trehalose, 0.9 mg NaCl, 0.2 mg Na ₂ HPO ₄ .
Storage Instructions	At -20°C for one year from date of receipt. After reconstitution, at 4°C for one month. It can also be aliquotted and stored frozen at -20°C for six months. Avoid repeated freezing and thawing.
Host	Rabbit
Uniprot ID	A1L314

Technical Details

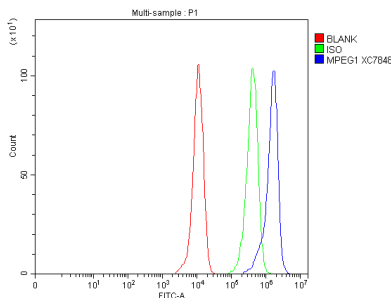
Immunogen	E.coli-derived mouse MPEG1 recombinant protein (Position: F31-D645). Mouse MPEG1 shares 79.4% and 93.5% amino acid (aa) sequence identity with human and rat MPEG1, respectively.
Form	Lyophilized
Concentration	Adding 0.2 ml of distilled water will yield a concentration of 500 ug/ml.
Purification	Immunogen affinity purified.
Suggested Dilutions	Western blot, 0.25-0.5 ug/ml, Human, Mouse, Rat

	Flow Cytometry (Fixed), 1-3 ug/1x10 ⁶ cells, Human ELISA, 0.1-0.5 ug/ml
--	---

Anti-MPEG1 Antibody Picoband® (A11803-1) Images



Western blot analysis of MPEG1 using anti-MPEG1 antibody (A11803-1). Electrophoresis was performed on a 10% SDS-PAGE gel at 80V (Stacking gel) / 120V (Resolving gel) for 2 hours. The sample well of each lane was loaded with 30 ug of sample under reducing conditions. Lane 1: human THP-1 whole cell lysates, Lane 2: human SH-SY5Y whole cell lysates, Lane 3: human RT4 whole cell lysates, Lane 4: human K562 whole cell lysates, Lane 5: rat spleen tissue lysates, Lane 6: rat thymus tissue lysates, Lane 7: mouse spleen tissue lysates, Lane 8: mouse thymus tissue lysates. After electrophoresis, proteins were transferred to a nitrocellulose membrane at 150 mA for 50-90 minutes. Blocked the membrane with 5% non-fat milk/TBS for 1.5 hour at RT. The membrane was incubated with rabbit anti-MPEG1 antigen affinity purified polyclonal antibody (A11803-1) at 0.5 ug/mL overnight at 4°C, then washed with TBS-0.1% Tween 3 times with 5 minutes each and probed with a goat anti-rabbit IgG-HRP secondary antibody at a dilution of 1:5000 for 1.5 hour at RT. The signal is developed using an ECL Plus Western Blotting Substrate (Catalog # AR1196-200) with Tanon 5200 system. A specific band was detected for MPEG1 at approximately 79 kDa. The expected band size for MPEG1 is at 79 kDa.



Flow Cytometry analysis of THP-1 cells using anti-MPEG1 antibody (A11803-1). Overlay histogram showing THP-1 cells stained with A11803-1 (Blue line). The cells were fixed with 4% paraformaldehyde and blocked with 10% normal goat serum. And then incubated with rabbit anti-MPEG1 Antibody (A11803-1, 1 ug/1x10⁶ cells) for 30 min at 20°C. DyLight®488 conjugated goat anti-rabbit IgG (BA1127, 5-10 ug/1x10⁶ cells) was used as secondary antibody for 30 minutes at 20°C. Isotype control antibody (Green line) was rabbit IgG (1 ug/1x10⁶) used under the same conditions. Unlabelled sample without incubation with primary antibody and secondary antibody (Red line) was used as a blank control.

Submit a product review to Biocompare.com

Submit a review of this product to Biocompare.com to receive a \$20 Amazon.com giftcard! Your reviews help your fellow scientists make the right decisions. Thank you for your contribution.



Anti-MPEG1 Antibody

For Research Use Only. Not for use in diagnostic procedures.