

## Anti-RTL1 Antibody Picoband®

Catalog Number: A11807

### About RTL1

RTL1 (retrotransposon like 1) is a retrotransposon derived protein coding gene. This gene is a retrotransposon-derived, paternally expressed imprinted gene that is highly expressed at the late fetal stage in both the fetus and placenta. It has an overlapping maternally expressed antisense transcript, which contains several microRNAs targeting the transcripts of this gene through an RNA interference (RNAi) mechanism. This gene is essential for maintenance of the fetal capillaries.

### Overview

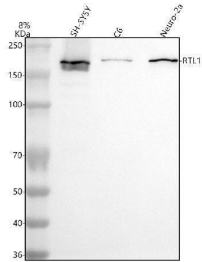
Product Name	Anti-RTL1 Antibody Picoband®
Reactive Species	Human, Mouse, Rat
Description	Boster Bio Anti-RTL1 Antibody Picoband® catalog # A11807. Tested in WB, Flow Cytometry, ELISA applications. This antibody reacts with Human, Mouse, Rat. The brand Picoband indicates this is a premium antibody that guarantees superior quality, high affinity, and strong signals with minimal background in Western blot applications. Only our best-performing antibodies are designated as Picoband, ensuring unmatched performance.
Application	ELISA, Flow Cytometry, WB
Clonality	Polyclonal
Formulation	Each vial contains 4 mg Trehalose, 0.9 mg NaCl, 0.2 mg Na <sub>2</sub> HPO <sub>4</sub> .
Storage Instructions	At -20°C for one year from date of receipt. After reconstitution, at 4°C for one month. It can also be aliquotted and stored frozen at -20°C for six months. Avoid repeated freezing and thawing.
Host	Rabbit
Uniprot ID	A6NKG5

### Technical Details

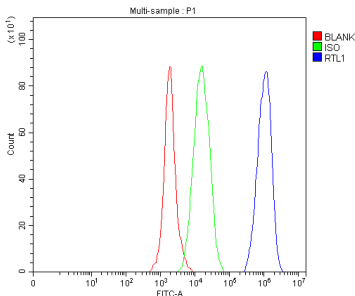
Immunogen	E.coli-derived human RTL1 recombinant protein (Position: H446-R1327). Human RTL1 shares 68.3% amino acid (aa) sequence identity with mouse RTL1.
Recommended Detection Systems	Boster recommends Enhanced Chemiluminescent Kit with anti-Rabbit IgG (EK1002) for Western blot.
Form	Lyophilized
Concentration	Adding 0.2 ml of distilled water will yield a concentration of 500 ug/ml.
Purification	Immunogen affinity purified.
Suggested Dilutions	Western blot, 0.25-0.5 ug/ml, Human, Mouse, Rat

Flow Cytometry(Fixed), 1-3 ug/1x10<sup>6</sup> cells, Human  
ELISA, 0.1-0.5 ug/ml, -

## Anti-RTL1 Antibody Picoband® (A11807) Images



Western blot analysis of RTL1 using anti-RTL1 antibody (A11807). Electrophoresis was performed on a 5-20% SDS-PAGE gel at 70V (Stacking gel) / 90V (Resolving gel) for 2-3 hours. The sample well of each lane was loaded with 30 ug of sample under reducing conditions. Lane 1: human SH-SY5Y whole cell lysates, Lane 2: rat C6 whole cell lysates, Lane 3: mouse Neuro-2a whole cell lysates. After electrophoresis, proteins were transferred to a nitrocellulose membrane at 150 mA for 50-90 minutes. Blocked the membrane with 5% non-fat milk/TBS for 1.5 hour at RT. The membrane was incubated with rabbit anti-RTL1 antigen affinity purified polyclonal antibody (Catalog # A11807) at 0.5 ug/mL overnight at 4°C, then washed with TBS-0.1%Tween 3 times with 5 minutes each and probed with a goat anti-rabbit IgG-HRP secondary antibody at a dilution of 1:5000 for 1.5 hour at RT. The signal is developed using an Enhanced Chemiluminescent detection (ECL) kit (Catalog # EK1002) with Tanon 5200 system. A specific band was detected for RTL1 at approximately 200 kDa. The expected band size for RTL1 is at 155 kDa.



Flow Cytometry analysis of SH-SY5Y cells using anti-RTL1 antibody (A11807). Overlay histogram showing SH-SY5Y cells stained with A11807 (Blue line). The cells were fixed with 4% paraformaldehyde and blocked with 10% normal goat serum. And then incubated with rabbit anti-RTL1 Antibody (A11807, 1 ug/1x10<sup>6</sup> cells) for 30 min at 20°C. DyLight®488 conjugated goat anti-rabbit IgG (BA1127, 5-10 ug/1x10<sup>6</sup> cells) was used as secondary antibody for 30 minutes at 20°C. Isotype control antibody (Green line) was rabbit IgG (1 ug/1x10<sup>6</sup>) used under the same conditions. Unlabelled sample without incubation with primary antibody and secondary antibody (Red line) was used as a blank control.

### Submit a product review to Biocompare.com

Submit a review of this product to Biocompare.com to receive a \$20 Amazon.com giftcard! Your reviews help your fellow scientists make the right decisions. Thank you for your contribution.



### Anti-RTL1 Antibody

For Research Use Only. Not for use in diagnostic procedures.