

Anti-Importin subunit alpha-8 KPNA7 Antibody

Catalog Number: A11830

About KPNA7

Karyopherin, a cytosolic and heterodimeric protein complex consisting of alpha and beta subunits, is responsible for targeting proteins with nuclear localization signals to the nuclear pore complex (NPC) by an energy requiring, Ran-dependent mechanism. The alpha subunit and imported substrate enter the nucleus and accumulate in the nucleoplasm, while the beta subunit accumulates at the NPC. KPNA7 is most closely related to KPNA2, but unlike KPNA2, KPNA7 primarily localizes to the nucleus. It has been suggested that KPNA7 may play a role in the transport of essential nuclear proteins required for early embryogenesis.

Overview

Product Name	Anti-Importin subunit alpha-8 KPNA7 Antibody
Reactive Species	Human
Description	Boster Bio Anti-Importin subunit alpha-8 KPNA7 Antibody (Catalog # A11830). Tested in ELISA, WB, IHC-P applications. This antibody reacts with Human.
Application	ELISA, IHC-P, WB
Clonality	Polyclonal
Formulation	KPNA7 Antibody is supplied in PBS containing 0.02% sodium azide.
Storage Instructions	KPNA7 antibody can be stored at 4°C for three months and -20°C, stable for up to one year. Avoid repeated freeze-thaw cycles. Antibodies should not be exposed to prolonged high temperatures.
Host	Rabbit
Uniprot ID	A9QM74

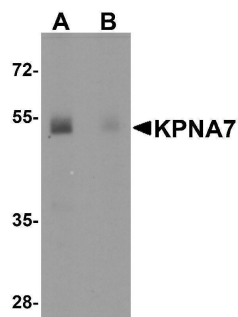
Technical Details

Immunogen	KPNA7 antibody was raised against a 13 amino acid synthetic peptide near the amino terminus of human KPNA7. The immunogen is located within amino acids 40 - 90 of KPNA7.
Predicted Reactive Species	Rabbit
Cross Reactivity	KPNA7 antibody is human specific. KPNA7 antibody is predicted to not cross-react with other Importin alpha family members.
Isotype	IgG
Form	Liquid
Concentration	1 mg/mL
Purification	KPNA7 Antibody is affinity chromatography purified via peptide column.

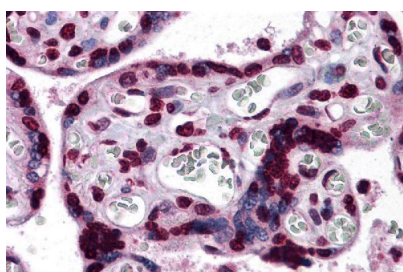
Suggested Dilutions

KPNA7 antibody can be used for detection of KPNA7 by Western blot at 1 ug/mL. Antibody can also be used for immunohistochemistry starting at 5 ug/mL.
Antibody validated: Western Blot in human samples and Immunohistochemistry in human samples.
All other applications and species not yet tested. Optimal dilutions for each application should be determined by the researcher.

Anti-Importin subunit alpha-8 KPNA7 Antibody (A11830) Images



Western blot analysis of KPNA7 in human spleen with KPNA7 antibody at 1 ug/ml in (A) the absence and (B) the presence of blocking peptide.



Immunohistochemistry of KPNA7 in human placenta tissue with KPNA7 antibody at 5 ug/mL.

Submit a product review to Biocompare.com

Submit a review of this product to Biocompare.com to receive a \$20 Amazon.com giftcard! Your reviews help your fellow scientists make the right decisions. Thank you for your contribution.



Anti-Importin subunit alpha-8 KPNA7 Antibody

For Research Use Only. Not for use in diagnostic procedures.