

## Anti-PRTFDC1 Antibody

Catalog Number: A11841

### About PRTFDC1

Phosphoribosyl transferase domain containing 1 (PRTFDC1) is highly homologous to the hypoxanthine phosphoribosyltransferase (HPRT1) and may have arisen from a gene duplication event of a common ancestor gene. Recently, it was shown that CpG islands in the PRTFDC1 promoter could be hypermethylated in ovarian cancers and oral squamous-cell carcinomas (OSCC), leading to gene silencing. Restoration of PRTFDC1 expression in OSCC inhibited cell growth in colony-formation assays, while knockdown of PRTFDC1 expression in OSCC that expressed the gene promoted cell growth. These results suggest that PRTFDC1 can act as a tumor-suppressor gene. At least three isoforms of PRTFDC1 are known to exist.

### Overview

Product Name	Anti-PRTFDC1 Antibody
Reactive Species	Human, Rat
Description	Boster Bio Anti-PRTFDC1 Antibody (Catalog # A11841). Tested in ELISA, WB applications. This antibody reacts with Human, Rat.
Application	ELISA, WB
Clonality	Polyclonal
Formulation	PRTFDC1 Antibody is supplied in PBS containing 0.02% sodium azide.
Storage Instructions	PRTFDC1 antibody can be stored at 4°C for three months and -20°C, stable for up to one year. Avoid repeated freeze-thaw cycles. Antibodies should not be exposed to prolonged high temperatures.
Host	Rabbit
Uniprot ID	Q9NRG1

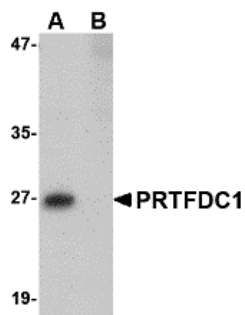
### Technical Details

Immunogen	PRTFDC1 antibody was raised against a 14 amino acid synthetic peptide from near the center of human PRTFDC1. The immunogen is located within amino acids 90 - 140 of PRTFDC1.
Predicted Reactive Species	Bovine, Chicken, Mouse, Pig
Isotype	IgG
Form	Liquid
Concentration	1 mg/mL
Purification	PRTFDC1 Antibody is affinity chromatography purified via peptide column.

Suggested Dilutions

PRTFDC1 antibody can be used for detection of PRTFDC1 by Western blot at 1 ug/mL.  
Antibody validated: Western Blot in human samples. All other applications and species not yet tested. Optimal dilutions for each application should be determined by the researcher.

## Anti-PRTFDC1 Antibody (A11841) Images



Western blot analysis of PRTFDC1 in human brain tissue lysate with PRTFDC1 antibody at 1 ug/mL in the (A) absence and (B) presence of blocking peptide.

### Submit a product review to Biocompare.com

Submit a review of this product to Biocompare.com to receive a \$20 Amazon.com giftcard! Your reviews help your fellow scientists make the right decisions. Thank you for your contribution.



Anti-PRTFDC1 Antibody

For Research Use Only. Not for use in diagnostic procedures.