

## Anti-LYR motif-containing protein 1 LYRM1 Antibody

Catalog Number: A11860

### About LYRM1

LYRM1 was one of many genes identified through a suppression subtractive hybridization comparing their expression in omental adipose tissue of obese patients compared to non-obese individuals. Further study confirms that both mRNA and protein levels of LYRM1 are higher in obese individuals. LYRM1 is widely expressed, with highest levels occurring in adipose and liver tissues. It is thought that LYRM1 promotes preadipocyte proliferation and can inhibit apoptosis of preadipocytes. Ectopic LYRM1 expression did not significantly affect adipogenesis, suggesting that LYRM1 can influence adipose tissue homeostasis by modulating the size of the preadipocyte pool.

### Overview

Product Name	Anti-LYR motif-containing protein 1 LYRM1 Antibody
Reactive Species	Human, Mouse, Rat
Description	Boster Bio Anti-LYR motif-containing protein 1 LYRM1 Antibody (Catalog # A11860). Tested in ELISA, WB, IHC-P, IF applications. This antibody reacts with Human, Mouse, Rat.
Application	ELISA, IF, IHC-P, WB
Clonality	Polyclonal
Formulation	LYRM1 Antibody is supplied in PBS containing 0.02% sodium azide.
Storage Instructions	LYRM1 antibody can be stored at 4°C for three months and -20°C, stable for up to one year. Avoid repeated freeze-thaw cycles. Antibodies should not be exposed to prolonged high temperatures.
Host	Rabbit
Uniprot ID	O43325

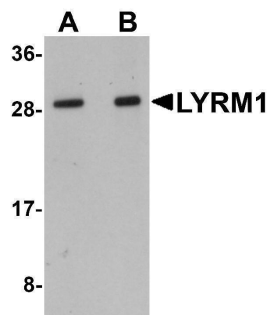
### Technical Details

Immunogen	LYRM1 antibody was raised against a 17 amino acid synthetic peptide near the center of human LYRM1. The immunogen is located within the first 50 amino acids of LYRM1.
Predicted Reactive Species	Bovine, Chicken, Mouse, Pig
Isotype	IgG
Form	Liquid
Concentration	1 mg/mL
Purification	LYRM1 Antibody is affinity chromatography purified via peptide column.
Suggested Dilutions	LYRM1 antibody can be used for detection of LYRM1 by Western blot at 1 - 2 ug/mL. Antibody can also be used for immunohistochemistry starting at 5 ug/mL. For immunofluorescence start at 20

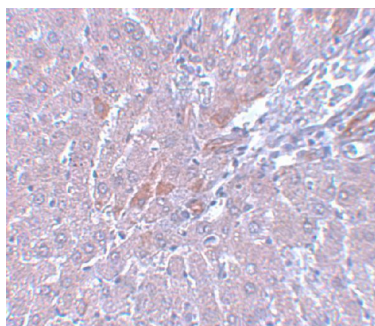
ug/mL.

Antibody validated: Western Blot in human samples; Immunohistochemistry in rat samples and Immunofluorescence in rat samples. All other applications and species not yet tested. Optimal dilutions for each application should be determined by the researcher.

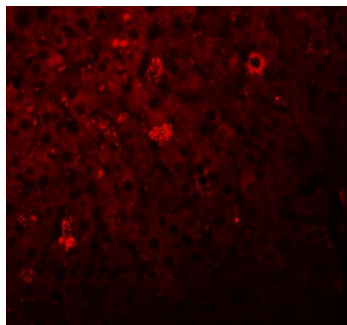
## Anti-LYR motif-containing protein 1 LYRM1 Antibody (A11860) Images



Western blot analysis of LYRM1 in human liver tissue lysate with LYRM1 antibody at (A) 1 and (B) 2 ug/mL.



Immunohistochemistry of LYRM1 in rat liver tissue with LYRM1 antibody at 5 ug/mL.



Immunofluorescence of LYRM1 in rat liver tissue with LYRM1 antibody at 20 ug/mL.

### Submit a product review to [Biocompare.com](https://www.biocompare.com)

Submit a review of this product to [Biocompare.com](https://www.biocompare.com) to receive a \$20 Amazon.com giftcard! Your reviews help your fellow scientists make the right decisions. Thank you for your contribution.



Anti-LYR motif-containing protein 1 LYRM1 Antibody

For Research Use Only. Not for use in diagnostic procedures.