

Anti-MCG10 PCBP4 Antibody

Catalog Number: A11870

About PCBP4

MCG10 is a member of the KH-domain RNA-binding protein family. Proteins of this family also referred to as alpha-CPs, bind to RNA with specificity for C-rich pyrimidine regions. Alpha-CPs play important roles in post-transcriptional activities and have different cellular distributions. MCG10 is induced by p53 and DNA damage via two p53-responsive promoter elements. Its overexpression in transfected cells results in the suppression of cell proliferation by inducing apoptosis and cell cycle arrest in G2-M. Decreased expression of one isoform of MCG10 has been observed in many forms of lung cancer, leading to speculation that MCG10 can act as a tumor suppressor. Multiple alternatively spliced isoforms of MCG10 have been identified.

Overview

Product Name	Anti-MCG10 PCBP4 Antibody
Reactive Species	Human
Description	Boster Bio Anti-MCG10 PCBP4 Antibody (Catalog # A11870). Tested in ELISA, WB, ICC, IF applications. This antibody reacts with Human.
Application	ELISA, IF, ICC, WB
Clonality	Polyclonal
Formulation	MCG10 Antibody is supplied in PBS containing 0.02% sodium azide.
Storage Instructions	MCG10 antibody can be stored at 4°C for three months and -20°C, stable for up to one year. Avoid repeated freeze-thaw cycles. Antibodies should not be exposed to prolonged high temperatures.
Host	Rabbit
Uniprot ID	P57723

Technical Details

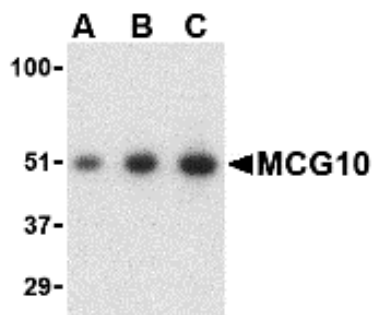
Immunogen	MCG10 antibody was raised against a 17 amino acid synthetic peptide from near the carboxy terminus of human MCG10. The immunogen is located within the last 50 amino acids of MCG10.
Predicted Reactive Species	Bovine, Mouse
Isotype	IgG
Form	Liquid
Concentration	1 mg/ml
Purification	MCG10 Antibody is affinity chromatography purified via peptide column.

Suggested Dilutions

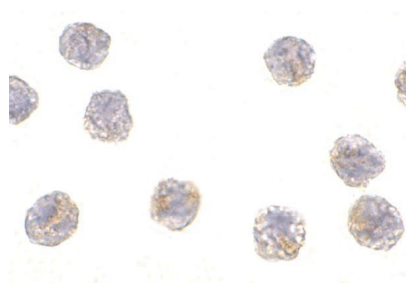
MCG10 antibody can be used for detection of MCG10 by Western blot at 0.5 - 2 ug/mL. Antibody can also be used for immunocytochemistry starting at 1 ug/mL. For immunofluorescence start at 20 ug/mL.

Antibody validated: Western Blot in human samples; Immunocytochemistry in human samples and Immunofluorescence in human samples. All other applications and species not yet tested. Optimal dilutions for each application should be determined by the researcher.

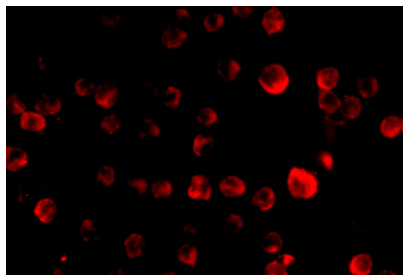
Anti-MCG10 PCBP4 Antibody (A11870) Images



Western blot analysis of MCG10 in HeLa cell lysate with MCG10 antibody at (A) 0.5, (B) 1 and (C) 2 ug/mL.



Immunocytochemistry of MCG10 in HeLa cells with MCG10 antibody at 1 ug/mL.



Immunofluorescence of MCG10 in HeLa cells with MCG10 antibody at 20 ug/mL.

Submit a product review to [Biocompare.com](https://www.biocompare.com)

Submit a review of this product to [Biocompare.com](https://www.biocompare.com) to receive a \$20 Amazon.com giftcard! Your reviews help your fellow scientists make the right decisions. Thank you for your contribution.



Anti-MCG10 PCBP4 Antibody

For Research Use Only. Not for use in diagnostic procedures.