

Anti-Kremen protein 2 KREMEN2 Antibody

Catalog Number: A11875

About KREMEN2

Kremen (Kringles containing protein marking the eye and the nose) proteins are type I transmembrane proteins that contain extracellular kringles, WSC and CUB domains and an intracellular region without any conserved motifs. Kremens bind a subset of the secreted Dickkopf proteins (Dkk 1, 2, and 4) with high affinity to modulate the canonical Wnt signaling pathway that is transduced by the ternary receptor complex composed of Wnt, Frizzled, and the LDL receptor related protein 5/6 (LRP5/6) co-receptor. Recent experiments have shown that KREMEN2 is a regulator of bone remodeling and raise the possibility that antagonizing KREMEN2 might prove beneficial in patients with bone loss disorders.

Overview

Product Name	Anti-Kremen protein 2 KREMEN2 Antibody
Reactive Species	Human, Mouse, Rat
Description	Boster Bio Anti-Kremen protein 2 KREMEN2 Antibody (Catalog # A11875). Tested in ELISA, WB, ICC applications. This antibody reacts with Human, Mouse, Rat.
Application	ELISA, ICC, WB
Clonality	Polyclonal
Formulation	KREMEN2 Antibody is supplied in PBS containing 0.02% sodium azide.
Storage Instructions	KREMEN2 antibody can be stored at 4°C for three months and -20°C, stable for up to one year.
Host	Rabbit
Uniprot ID	Q8NCW0

Technical Details

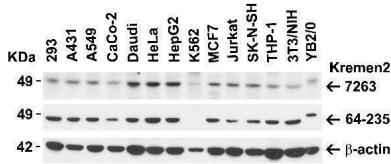
Immunogen	Anti-KREMEN2 antibody was raised against a peptide corresponding to 14 amino acids near the carboxy terminus of human KREMEN2. The immunogen is located within amino acids 390-440 of KREMEN2.
Predicted Reactive Species	Bovine, Mouse
Cross Reactivity	Multiple isoforms of KREMEN2 are known to exist. KREMEN2 antibody is predicted to not cross-react with other Kremen protein family members.
Isotype	IgG
Form	Liquid
Concentration	1 mg/mL
Purification	KREMEN2 Antibody is affinity chromatography purified via peptide column.

Suggested Dilutions

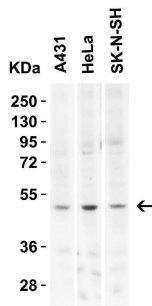
WB: 1-2 ug/mL; ICC: 5 ug/mL.

Antibody validated: Western Blot in human, mouse and rat samples; Immunocytochemistry in human samples. All other applications and species not yet tested. Optimal dilutions for each application should be determined by the researcher.

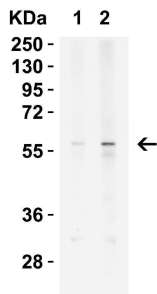
Anti-Kremen protein 2 KREMEN2 Antibody (A11875) Images



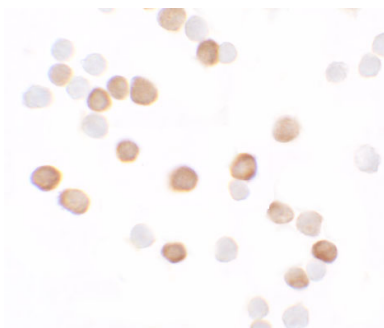
Independent Antibody Validation (IAV) via Protein Expression Profile in Human, Mouse and Rat Cell Lines Loading: 15 ug of lysates per lane. Antibodies: KREMEN2, A11875 (2 ug/mL), KREMEN2, 64-235 (1 ug/mL) and beta-actin, 3779 (2 ug/mL), 1h incubation at RT in 5% NFD/MTBST. Secondary: Goat anti-rabbit IgG HRP conjugate at 1:10000 dilution.



Western Blot Validation in Human Cell Lines Loading: 15 ug of lysates per lane. Antibodies: KREMEN2, A11875 (2 ug/mL), 1h incubation at RT in 5% NFD/MTBST. Secondary: Goat anti-rabbit IgG HRP conjugate at 1:10000 dilution.



Western Blot Validation in Mouse Spleen Tissue Lysate Loading: 15 ug of lysates per lane. Antibodies: KREMEN2 A11875 (Lane 1: 1 ug/mL and Lane 2: 2 ug/mL, 1h incubation at RT in 5% NFD/MTBST. Secondary: Goat anti-rabbit IgG HRP conjugate at 1:10000 dilution.



Immunocytochemistry Validation of KREMEN2 in HeLa Cells Immunocytochemical analysis of HeLa cells using anti-KREMEN2 antibody (A11875) at 5 ug/ml. Cells was fixed with formaldehyde and blocked with 10% serum for 1 h at RT; antigen retrieval was by heat mediation with a citrate buffer (pH6). Samples were incubated with primary antibody overnight at 4° C. A goat anti-rabbit IgG H&L (HRP) at 1/250 was used as secondary. Counter stained with Hematoxylin.

Submit a product review to Biocompare.com

Submit a review of this product to Biocompare.com to receive a \$20 Amazon.com giftcard! Your reviews help your fellow scientists make the right decisions. Thank you for your contribution.



Anti-Kremen protein 2 KREMEN2 Antibody

For Research Use Only. Not for use in diagnostic procedures.