

Anti-GZF1 Antibody

Catalog Number: A11916

About GZF1

The GDNF-inducible zinc finger protein 1 (GZF1) is a sequence-specific transcriptional repressor with a BTB/POZ domain and ten zinc finger motifs whose expression is required for renal branching morphogenesis during kidney development. GZF1 binds to the 5' regulatory region of the homeodomain protein HOXA10, suggesting that GZF1 may play a role in morphogenesis other than kidney development. Recent experiments have indicated that GZF1 associates with nucleolin and this association is mediated by the first four zinc finger motifs of GZF1. It is thought that Nucleolin modulates the subcellular localization of GZF1 as well as its transcriptional repressor activity.

Overview

Product Name	Anti-GZF1 Antibody
Reactive Species	Human
Description	Boster Bio Anti-GZF1 Antibody (Catalog # A11916). Tested in ELISA, WB, IHC-P, IF applications. This antibody reacts with Human.
Application	ELISA, IF, IHC-P, WB
Clonality	Polyclonal
Formulation	GZF1 Antibody is supplied in PBS containing 0.02% sodium azide.
Storage Instructions	GZF1 antibody can be stored at 4°C for three months and -20°C, stable for up to one year. Avoid repeated freeze-thaw cycles. Antibodies should not be exposed to prolonged high temperatures.
Host	Rabbit
Uniprot ID	Q9H116

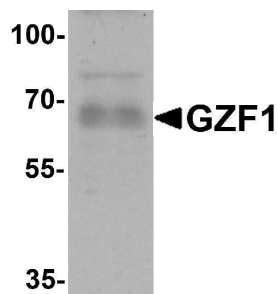
Technical Details

Immunogen	GZF1 antibody was raised against an 18 amino acid synthetic peptide near the carboxy terminus of human GZF1. The immunogen is located within amino acids 600 - 650 of GZF1.
Predicted Reactive Species	Mouse, Rat
Cross Reactivity	GZF1 antibody is human specific. At least four isoforms of GZF1 are known to exist.
Isotype	IgG
Form	Liquid
Concentration	1 mg/mL
Purification	GZF1 Antibody is affinity chromatography purified via peptide column.

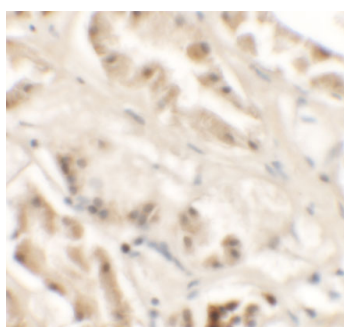
Suggested Dilutions

GZF1 antibody can be used for detection of GZF1 by Western blot at 1 ug/mL. Antibody can also be used for immunohistochemistry starting at 2.5 ug/mL. For immunofluorescence start at 2.5 ug/mL. Antibody validated: Western Blot in human samples; Immunohistochemistry in human samples and Immunofluorescence in human samples. All other applications and species not yet tested. Optimal dilutions for each application should be determined by the researcher.

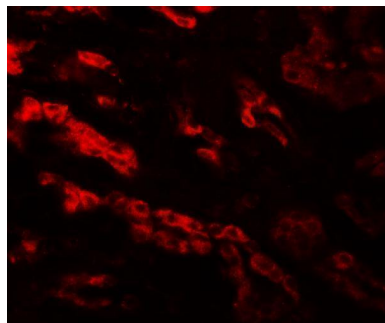
Anti-GZF1 Antibody (A11916) Images



Western blot analysis of GZF1 in human heart tissue lysate with GZF1 antibody at 1 ug/mL.



Immunohistochemistry of GZF1 in human kidney tissue with GZF1 antibody at 2.5 ug/mL.



Immunofluorescence of GZF1 in human kidney tissue with GZF1 antibody at 20 ug/mL.

Submit a product review to [Biocompare.com](https://www.biocompare.com)

Submit a review of this product to [Biocompare.com](https://www.biocompare.com) to receive a \$20 Amazon.com giftcard! Your reviews help your fellow scientists make the right decisions. Thank you for your contribution.



Anti-GZF1 Antibody

For Research Use Only. Not for use in diagnostic procedures.