

## Anti-PTCHD2 DISP3 Antibody

Catalog Number: A11929-1

### About PTCHD2

PTCHD2, also known as DISP3, is the third of three known homologs of the *D. melanogaster* protein Dispatched. It is a multi-transmembrane protein containing two PTCH/DISP domains and is thought to be involved in the release of lipid-anchored secreted proteins. Like DISP1 and DISP2, DISP3 has been implicated in signaling pathways during embryogenesis, tissue regeneration, and carcinogenesis. It is highly expressed in Purkinje cells, hippocampal neurons, and retinal ganglion cells. Recently, it has been shown that PTCHD2 localizes within the endoplasmic reticulum and colocalizes with cholesterol, and given that its expression is regulated by thyroid hormone (T3), it has been suggested that DISP3 may be a link between thyroid hormone and cholesterol metabolism.

### Overview

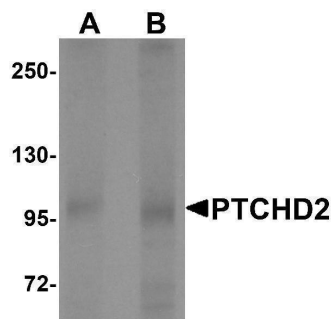
Product Name	Anti-PTCHD2 DISP3 Antibody
Reactive Species	Human, Mouse, Rat
Description	Boster Bio Anti-PTCHD2 DISP3 Antibody (Catalog # A11929-1). Tested in ELISA, WB, IHC-P, IF applications. This antibody reacts with Human, Mouse, Rat.
Application	ELISA, IF, IHC-P, WB
Clonality	Polyclonal
Formulation	PTCHD2 Antibody is supplied in PBS containing 0.02% sodium azide.
Storage Instructions	PTCHD2 antibody can be stored at 4°C for three months and -20°C, stable for up to one year. Avoid repeated freeze-thaw cycles. Antibodies should not be exposed to prolonged high temperatures.
Host	Rabbit
Uniprot ID	Q9P2K9

### Technical Details

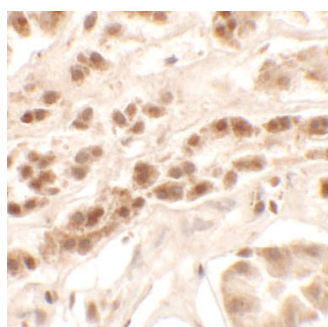
Immunogen	PTCHD2 antibody was raised against a 19 amino acid synthetic peptide from near the center of human PTCHD2. The immunogen is located within amino acids 780 - 830 of PTCHD2.
Predicted Reactive Species	Chicken
Cross Reactivity	At least two isoforms of PTCHD2 are known to exist. This antibody is specific for PTCHD2 and will not recognize the other DISP family of proteins.
Isotype	IgG
Form	Liquid
Concentration	1 mg/mL

Purification	PTCHD2 Antibody is affinity chromatography purified via peptide column.
Suggested Dilutions	<p>PTCHD2 antibody can be used for detection of EPAC1 by Western blot at 1 - 2 ug/mL. Antibody can also be used for immunohistochemistry starting at 2.5 ug/mL. For immunofluorescence start at 20 ug/mL.</p> <p>Antibody validated: Western Blot in mouse samples; Immunohistochemistry in human samples and Immunofluorescence in human samples. All other applications and species not yet tested. Optimal dilutions for each application should be determined by the researcher.</p>

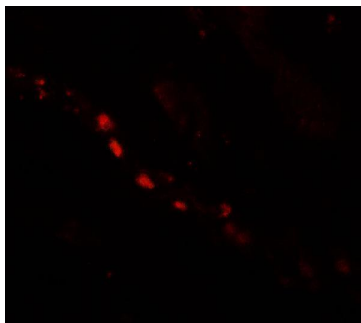
## Anti-PTCHD2 DISP3 Antibody (A11929-1) Images



Western blot analysis of PTCHD2 in mouse kidney tissue lysate with PTCHD2 antibody at (A) 1 and (B) 2 ug/mL.



Immunohistochemistry of PTCHD2 in human kidney tissue with PTCHD2 antibody at 2.5 ug/mL.



Immunofluorescence of PTCHD2 in human kidney tissue with PTCHD2 antibody at 20 ug/mL.

### Submit a product review to [Biocompare.com](https://www.biocompare.com)

Submit a review of this product to [Biocompare.com](https://www.biocompare.com) to receive a \$20 Amazon.com giftcard! Your reviews help your fellow scientists make the right decisions. Thank you for your contribution.



Anti-PTCHD2 DISP3 Antibody

For Research Use Only. Not for use in diagnostic procedures.