

Anti-Slc35D1 Antibody

Catalog Number: A11935

About SLC35D1

The solute carrier family Slc35 consists of at least 17 proteins that act as nucleotide sugar transporters localized to the Golgi apparatus and endoplasmic reticulum. The role of the ER-resident Slc family member Slc35D1 is to transport both UDP-glucuronic acid and UDP-N-acetylgalactosamine. These molecules can serve as substrates for chondroitin sulfate biosynthesis and mice lacking the Slc35D1 gene developed a lethal form of skeletal dysplasia with severe shortening of limbs and facial structures. Examination of epiphyseal cartilage in these mice revealed a decreased proliferating zone with round chondrocytes, scarce matrices, and reduced proteoglycan aggregates. Loss of function mutations in human Slc35D1 cause Schneckenbecken dysplasia, a severe skeletal dysplasia.

Overview

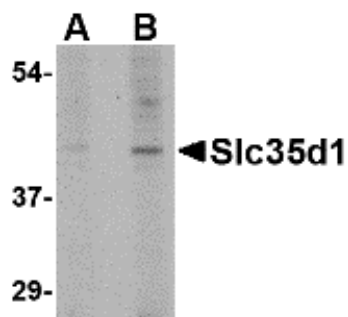
Product Name	Anti-Slc35D1 Antibody
Reactive Species	Human
Description	Boster Bio Anti-Slc35D1 Antibody (Catalog # A11935). Tested in ELISA, WB, ICC applications. This antibody reacts with Human.
Application	ELISA, ICC, WB
Clonality	Polyclonal
Formulation	Slc35D1 Antibody is supplied in PBS containing 0.02% sodium azide.
Storage Instructions	Slc35D1 antibody can be stored at 4°C for three months and -20°C, stable for up to one year. Avoid repeated freeze-thaw cycles. Antibodies should not be exposed to prolonged high temperatures.
Host	Rabbit
Uniprot ID	Q9NTN3

Technical Details

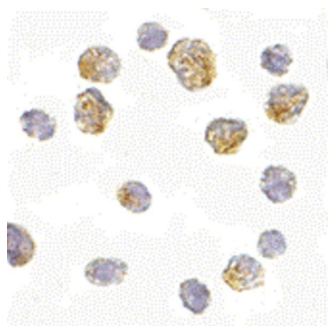
Immunogen	Slc35D1 antibody was raised against a 20 amino acid synthetic peptide near the carboxy terminus of the human Slc35D1. The immunogen is located within the last 50 amino acids of Slc35D1.
Predicted Reactive Species	Bovine, Pig
Cross Reactivity	This antibody is predicted to not cross-react with the highly homologous Slc35D2.
Isotype	IgG
Form	Liquid
Concentration	1 mg/mL

Purification	Slc35D1 Antibody is affinity chromatography purified via peptide column.
Suggested Dilutions	<p>Dilute the sample so that the expected range of concentrations fall within the detection range of this kit.</p> <p>If the expected range of concentration is unknown, a pilot test should be conducted to decide the optimal dilution ratio for your samples.</p> <p>Some PubMed article(s) citing the expression level of this target are as follows:</p> <p>Boster Bio's internal QC testing used:</p> <p>Slc35D1 antibody can be used for detection of Slc35D1 by Western blot at 1 - 2 ug/mL. Antibody can also be used for immunocytochemistry starting at 5 ug/mL.</p> <p>Antibody validated: Western Blot in human samples and Immunocytochemistry in human samples.</p> <p>All other applications and species not yet tested. Optimal dilutions for each application should be determined by the researcher.</p>

Anti-Slc35D1 Antibody (A11935) Images



Western blot analysis of Slc35D1 in Daudi lysate with Slc35D1 antibody at (A) 1 and (B) 2 ug/mL.



Immunocytochemistry of Slc35D1 in Daudi cells with Slc35D1 antibody at 5 ug/mL.

Submit a product review to Biocompare.com

Submit a review of this product to Biocompare.com to receive a \$20 Amazon.com giftcard! Your reviews help your fellow scientists make the right decisions. Thank you for your contribution.



Anti-Slc35D1 Antibody