

## Anti-Transmembrane protein 192 TMEM192 Antibody

Catalog Number: A11938

### About TMEM192

TMEM192 is a widely expressed, four transmembrane protein that localizes to late endosomal/lysosomal membranes. This localization is mediated by two dileucine motifs present at the amino-terminus of TMEM192. A cysteine residue near the carboxy residue is responsible for disulfide bond formation in TMEM192 homodimers. Little is known about the function of this protein.

### Overview

Product Name	Anti-Transmembrane protein 192 TMEM192 Antibody
Reactive Species	Human, Mouse, Rat
Description	Boster Bio Anti-Transmembrane protein 192 TMEM192 Antibody (Catalog # A11938). Tested in ELISA, WB, IHC-P, IF applications. This antibody reacts with Human, Mouse, Rat.
Application	ELISA, IF, IHC-P, WB
Clonality	Polyclonal
Formulation	TMEM192 Antibody is supplied in PBS containing 0.02% sodium azide.
Storage Instructions	Antibody can be stored at 4°C up to one year. Antibodies should not be exposed to prolonged high temperatures.
Host	Rabbit
Uniprot ID	Q8IY95

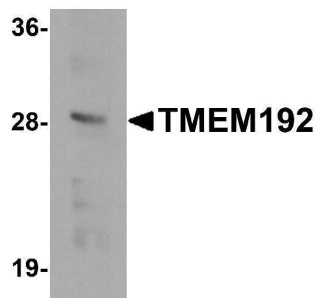
### Technical Details

Immunogen	TMEM192 antibody was raised against a 17 amino acid synthetic peptide near the carboxy terminus of human TMEM192. The immunogen is located within amino acids 180 - 230 of TMEM192.
Predicted Reactive Species	Bovine, Pig
Cross Reactivity	At least two isoforms of TMEM192 are known to exist; this antibody will recognize both. TMEM192 antibody is predicted to not cross-react with other TMEM proteins.
Isotype	IgG
Form	Liquid
Concentration	1 mg/mL
Purification	TMEM192 Antibody is affinity chromatography purified via peptide column.
Suggested Dilutions	TMEM192 antibody can be used for detection of TMEM192 by Western blot at 0.5 ug/mL. Antibody

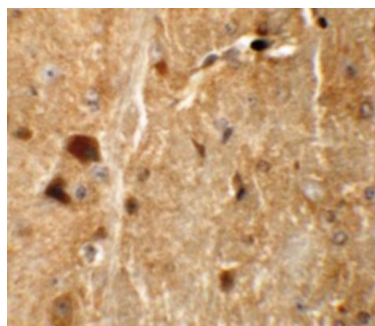
can also be used for immunohistochemistry starting at 5 ug/mL. For immunofluorescence start at 20 ug/mL.

Antibody validated: Western Blot in human samples; Immunohistochemistry in mouse samples and Immunofluorescence in mouse samples. All other applications and species not yet tested. Optimal dilutions for each application should be determined by the researcher.

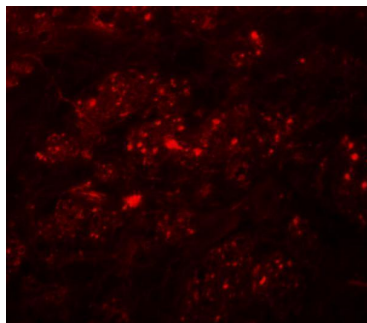
## Anti-Transmembrane protein 192 TMEM192 Antibody (A11938) Images



Western blot analysis of TMEM192 in SK-N-SH cell lysate with TMEM192 antibody at 0.5 ug/mL.



Immunohistochemistry of TMEM192 in mouse brain tissue with TMEM192 antibody at 5 ug/mL.



Immunofluorescence of TMEM192 in mouse brain tissue with TMEM192 antibody at 20 ug/mL.

### Submit a product review to [Biocompare.com](https://www.biocompare.com)

Submit a review of this product to [Biocompare.com](https://www.biocompare.com) to receive a \$20 Amazon.com giftcard! Your reviews help your fellow scientists make the right decisions. Thank you for your contribution.



Anti-Transmembrane protein 192 TMEM192 Antibody

For Research Use Only. Not for use in diagnostic procedures.