

## Anti-CRIM2 KCP Antibody

Catalog Number: A11951

### About KCP

CRIM2, also known as Kielin/chordin-like protein (KCP), is a novel enhancer of BMP signaling. It binds to BMP7, a morphogen that is important for kidney development and part of the kidney's physiological response to repair of acute kidney injury, enhancing its binding to its receptor. Because of this, CRIM2 has been suggested as a potential antifibrotic therapy in acute and chronic kidney injury. CRIM2 can also interact directly with either activin or TGF-beta1, suppressing activin- and TGF-beta1-dependent transcription.

### Overview

Product Name	Anti-CRIM2 KCP Antibody
Reactive Species	Human, Mouse, Rat
Description	Boster Bio Anti-CRIM2 KCP Antibody (Catalog # A11951). Tested in ELISA, WB applications. This antibody reacts with Human, Mouse, Rat.
Application	ELISA, WB
Clonality	Polyclonal
Formulation	CRIM2 Antibody is supplied in PBS containing 0.02% sodium azide.
Storage Instructions	CRIM2 antibody can be stored at 4°C for three months and -20°C, stable for up to one year. Avoid repeated freeze-thaw cycles. Antibodies should not be exposed to prolonged high temperatures.
Host	Rabbit
Uniprot ID	Q6ZWJ8

### Technical Details

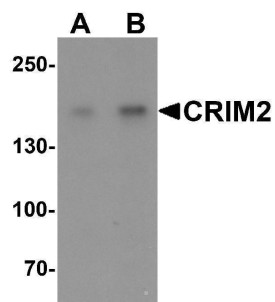
Immunogen	CRIM2 antibody was raised against a 15 amino acid synthetic peptide near the carboxy terminus of human CRIM2. The immunogen is located within amino acids 1320 - 1370 of CRIM2.
Predicted Reactive Species	Bovine, Pig
Cross Reactivity	At least two isoforms of CRIM2 are known to exist; this antibody will only detect the larger isoform. CRIM2 antibody is predicted to not cross-react with CRIM1.
Isotype	IgG
Form	Liquid
Concentration	1 mg/mL
Purification	CRIM2 Antibody is affinity chromatography purified via peptide column.

Suggested Dilutions

CRIM2 antibody can be used for detection of CRIM2 by Western blot at 1 - 2 ug/mL.  
Antibody validated: Western Blot in human samples. All other applications and species not yet tested. Optimal dilutions for each application should be determined by the researcher.

## Anti-CRIM2 KCP Antibody (A11951) Images

---



Western blot analysis of CRIM2 in Jurkat cell lysate with CRIM2 antibody at (A) 1 and (B) 2 ug/mL.

---

### Submit a product review to Biocompare.com

Submit a review of this product to Biocompare.com to receive a \$20 Amazon.com giftcard! Your reviews help your fellow scientists make the right decisions. Thank you for your contribution.



Anti-CRIM2 KCP Antibody

For Research Use Only. Not for use in diagnostic procedures.