

Anti-KappaB ras NKIRAS1 Antibody

Catalog Number: A11990

About NKIRAS1

KappaB ras-1 (kappaB-ras-1) and kappaB-ras-2 are two small proteins that similar to Ras-like small GTPases that associate with IkappaB (IkappaB), an inhibitor of the transcription factor NF-kappaB. IkappaB exists in two homologous forms, IkappaB-alpha and IkappaB-beta, although IkappaB-beta contains a unique 47-amino acid region within its ankyrin domain. While inactive IkappaB-alpha-NF-kappaB complexes can shuttle in and out of the nucleus, IkappaB-beta-NF-kappaB complexes are retained exclusively in the cytoplasm. It is suggested that kappaB-ras proteins preferentially bind to the IkappaB-beta form through this unique insert within the ankyrin region, thus modulating the cellular location of IkappaB-beta and regulating the rate of degradation of IkappaB-beta. This antibody detects both kappaB-ras1 and kappaB-ras2.

Overview

Product Name	Anti-KappaB ras NKIRAS1 Antibody
Reactive Species	Human, Mouse, Rat
Description	Boster Bio Anti-KappaB ras NKIRAS1 Antibody (Catalog # A11990). Tested in ELISA, WB, IHC-P applications. This antibody reacts with Human, Mouse, Rat.
Application	ELISA, IHC-P, WB
Clonality	Polyclonal
Formulation	KappaB ras Antibody is supplied in PBS containing 0.02% sodium azide.
Storage Instructions	KappaB ras antibody can be stored at 4°C for three months and -20°C, stable for up to one year. Avoid repeated freeze-thaw cycles. Antibodies should not be exposed to prolonged high temperatures.
Host	Rabbit
Uniprot ID	Q9NYS0

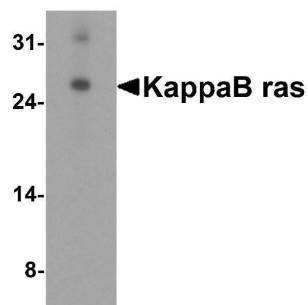
Technical Details

Immunogen	KappaB ras antibody was raised against a 18 amino acid synthetic peptide from near the center of human KappaB ras 1. The immunogen is located within amino acids 80 - 130 of KappaB ras.
Predicted Reactive Species	Chicken
Isotype	IgG
Form	Liquid
Concentration	1 mg/ml
Purification	KappaB ras Antibody is affinity chromatography purified via peptide column.

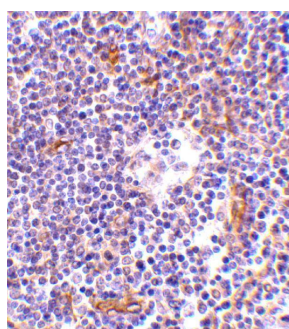
Suggested Dilutions

KappaB ras antibody can be used for detection of KappaB ras by Western blot at 2 ug/mL. Antibody can also be used for immunohistochemistry starting at 1 ug/mL.
Antibody validated: Western Blot in mouse samples and Immunohistochemistry in human samples.
All other applications and species not yet tested. Optimal dilutions for each application should be determined by the researcher.

Anti-KappaB ras NKIRAS1 Antibody (A11990) Images



Western blot analysis of KappaB ras in RAW 264.7 cell lysate with KappaB ras antibody at 2 ug/mL.



Immunohistochemistry of KappaB ras in human lymph node tissue with KappaB ras antibody at 1 ug/mL.

Submit a product review to [Biocompare.com](https://www.biocompare.com)

Submit a review of this product to [Biocompare.com](https://www.biocompare.com) to receive a \$20 Amazon.com giftcard! Your reviews help your fellow scientists make the right decisions. Thank you for your contribution.



Anti-KappaB ras NKIRAS1 Antibody

For Research Use Only. Not for use in diagnostic procedures.