

## Anti-KappaB ras1 NKIRAS1 Antibody

Catalog Number: A11990-1

### About NKIRAS1

KappaB ras-1 (kappaB-ras-1) and kappaB-ras-2 are two small proteins that similar to Ras-like small GTPases that associate with IkappaB (IkappaB), an inhibitor of the transcription factor NF-kappaB. IkappaB exists in two homologous forms, IkappaB-alpha and IkappaB-beta, although IkappaB-beta contains a unique 47-amino acid region within its ankyrin domain. While inactive IkappaB-alpha-NF-kappaB complexes can shuttle in and out of the nucleus, IkappaB-beta-NF-kappaB complexes are retained exclusively in the cytoplasm. It is suggested that kappaB-ras proteins preferentially bind to the IkappaB-beta form through this unique insert within the ankyrin region, thus modulating the cellular location of IkappaB-beta and regulating the rate of degradation of IkappaB-beta. This antibody is specific for kappaB-ras1 and has no cross-reactivity to kappaB-ras2.

### Overview

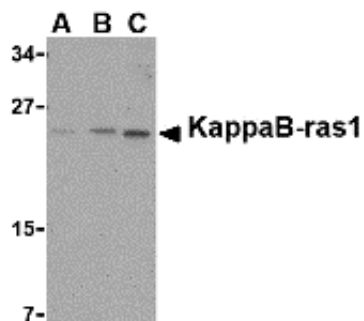
Product Name	Anti-KappaB ras1 NKIRAS1 Antibody
Reactive Species	Human, Mouse
Description	Boster Bio Anti-KappaB ras1 NKIRAS1 Antibody (Catalog # A11990-1). Tested in ELISA, WB, ICC applications. This antibody reacts with Human, Mouse.
Application	ELISA, ICC, WB
Clonality	Polyclonal
Formulation	KappaB ras1 Antibody is supplied in PBS containing 0.02% sodium azide.
Storage Instructions	KappaB ras1 antibody can be stored at 4°C for three months and -20°C, stable for up to one year. Avoid repeated freeze-thaw cycles. Antibodies should not be exposed to prolonged high temperatures.
Host	Rabbit
Uniprot ID	Q9NYS0

### Technical Details

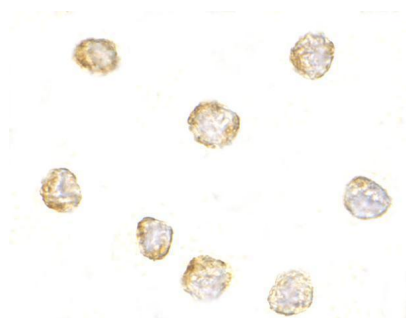
Immunogen	KappaB ras1 antibody was raised against a 15 amino acid synthetic peptide from near the carboxy terminus of human KappaB ras1. The immunogen is located within the last 50 amino acids of KappaB ras1.
Predicted Reactive Species	Chicken
Isotype	IgG
Form	Liquid
Concentration	1 mg/ml

Purification	KappaB ras1 Antibody is affinity chromatography purified via peptide column.
Suggested Dilutions	KappaB ras1 antibody can be used for detection of KappaB ras1 by Western blot at 0.5 - 2 ug/mL. Antibody can also be used for immunocytochemistry starting at 1 ug/mL. Antibody validated: Western Blot in mouse samples and Immunocytochemistry in mouse samples. All other applications and species not yet tested. Optimal dilutions for each application should be determined by the researcher.

## Anti-KappaB ras1 NKIRAS1 Antibody (A11990-1) Images



Western blot analysis of KappaB ras1 in RAW264.7 cell lysate with KappaB ras1 antibody at (A) 0.5, (B) 1 and (C) 2 ug/mL.



Immunocytochemistry of KappaB-ras1 in RAW264.7 cells with KappaB-ras1 antibody at 1 ug/mL.

### Submit a product review to [Biocompare.com](https://www.biocompare.com)

Submit a review of this product to [Biocompare.com](https://www.biocompare.com) to receive a \$20 Amazon.com giftcard! Your reviews help your fellow scientists make the right decisions. Thank you for your contribution.



Anti-KappaB ras1 NKIRAS1 Antibody

For Research Use Only. Not for use in diagnostic procedures.