

Anti-OSTbeta/SLC51B Antibody

Catalog Number: A12006

About SLC51B

Enables bile acid transmembrane transporter activity and protein heterodimerization activity. Involved in several processes, including bile acid and bile salt transport; positive regulation of establishment of protein localization; and positive regulation of protein glycosylation. Located in basolateral plasma membrane. Part of protein-containing complex. Is expressed in liver and small intestine. Orthologous to human SLC51B (SLC51 subunit beta).

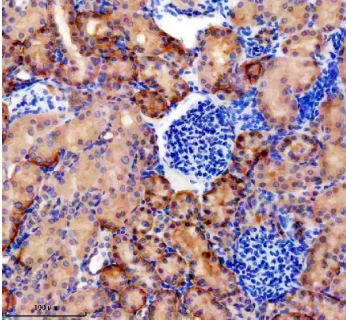
Overview

Product Name	Anti-OSTbeta/SLC51B Antibody
Reactive Species	Mouse
Description	Boster Bio Anti-OSTbeta/SLC51B Antibody catalog # A12006. Tested in IHC, Flow Cytometry applications. This antibody reacts with Mouse.
Application	Flow Cytometry, IHC
Clonality	Polyclonal
Formulation	Each vial contains 4 mg Trehalose, 0.9 mg NaCl, 0.2 mg Na ₂ HPO ₄ .
Storage Instructions	At -20°C for one year from date of receipt. After reconstitution, at 4°C for one month. It can also be aliquotted and stored frozen at -20°C for six months. Avoid repeated freezing and thawing.
Host	Rabbit
Uniprot ID	Q80WK2

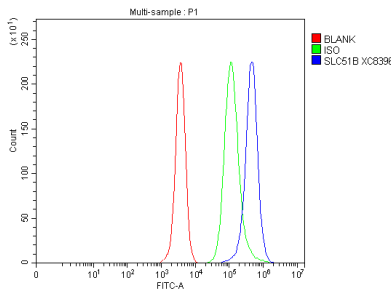
Technical Details

Immunogen	A synthetic peptide corresponding to a sequence at the N-terminus of human OSTbeta/SLC51B.
Form	Lyophilized
Concentration	Adding 0.2 ml of distilled water will yield a concentration of 500 ug/ml.
Purification	Immunogen affinity purified.
Suggested Dilutions	Immunohistochemistry(Paraffin-embedded Section), 2-5 ug/ml, Mouse Flow Cytometry (Fixed), 1-3 ug/1x10 ⁶ cells, Mouse

Anti-OSTbeta/SLC51B Antibody (A12006) Images



IHC analysis of SLC51B using anti-SLC51B antibody (A12006). SLC51B was detected in a paraffin-embedded section of mouse kidney tissue. Heat mediated antigen retrieval was performed in EDTA buffer (pH 8.0, epitope retrieval solution). The tissue section was blocked with 10% goat serum. The tissue section was then incubated with 2 ug/ml rabbit anti-SLC51B Antibody (A12006) overnight at 4°C. Peroxidase Conjugated Goat Anti-rabbit IgG was used as secondary antibody and incubated for 30 minutes at 37°C. The tissue section was developed using HRP Conjugated Rabbit IgG Super Vision Assay Kit (Catalog # SV0002) with DAB as the chromogen.



Flow Cytometry analysis of HEPA1-6 cells using anti-SLC51B antibody (A12006). Overlay histogram showing HEPA1-6 cells stained with A12006 (Blue line). The cells were fixed with 4% paraformaldehyde and blocked with 10% normal goat serum. And then incubated with rabbit anti-SLC51B Antibody (A12006, 1 ug/1x10⁶ cells) for 30 min at 20°C. Fluoro488 conjugated goat anti-rabbit IgG (BA1127, 5-10 ug/1x10⁶ cells) was used as secondary antibody for 30 minutes at 20°C. Isotype control antibody (Green line) was rabbit IgG (1 ug/1x10⁶) used under the same conditions. Unlabelled sample without incubation with primary antibody and secondary antibody (Red line) was used as a blank control.

Submit a product review to Biocompare.com

Submit a review of this product to Biocompare.com to receive a \$20 Amazon.com giftcard! Your reviews help your fellow scientists make the right decisions. Thank you for your contribution.



Anti-OSTbeta/SLC51B Antibody

For Research Use Only. Not for use in diagnostic procedures.