

Anti-COBRA1 (NELF B) Antibody

Catalog Number: A12025

About COBRA1

COBRA1 (cofactor of BRCA1) also known as NELF-B, is an essential component of the negative elongation factor (NELF) complex. COBRA1 has been shown to directly bind estrogen receptor alpha (ERalpha) and repress ERalpha-mediated transcription (Aiyar SE et al., 2004). COBRA1 has also been demonstrated to interact with c-Jun and c-Fos suggesting a role in modulation of the AP-1 pathway and therefore may be important in cell proliferation, differentiation, apoptosis and oncogenesis (Zhong H et al., 2004)

Overview

| | |
|----------------------|--|
| Product Name | Anti-COBRA1 (NELF B) Antibody |
| Reactive Species | Human, Mouse, Rat |
| Description | Boster Bio Anti-COBRA1 (NELF B) Antibody (Catalog # A12025). Tested in WB applications. This antibody reacts with Human, Mouse, Rat. |
| Application | WB |
| Clonality | Monoclonal F7E4 |
| Formulation | PBS + 0.05% NaN ₃ |
| Storage Instructions | Recommended that the undiluted antibody be aliquoted into smaller working volumes (10-30 uL/vial depending on usage) upon arrival and stored long term at -20° C or -80° C, while keeping a working aliquot stored at 4° C for short term. Avoid freeze/thaw cycles. Stable for at least 1 year. After date of receipt, stable for at least 1 year at -20°C. |
| Host | Mouse |
| Uniprot ID | Q8WX92 |

Technical Details

| | |
|----------------------------|--|
| Immunogen | Recombinant full length human COBRA1 purified from E. coli. Immunogen species is Human. |
| Predicted Reactive Species | Canine, Guinea Pig, Pig, Rabbit |
| Isotype | IgG1 |
| Form | Liquid |
| Concentration | 0.5-1mg/ml, actual concentration vary by lot. Use suggested dilution ratio to decide dilution procedure. |
| Purification | Protein G purified culture supernatant. |
| Suggested Dilutions | Dilute the sample so that the expected range of concentrations fall within the detection range of this |

kit.

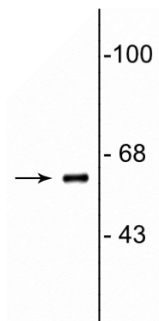
If the expected range of concentration is unknown, a pilot test should be conducted to decide the optimal dilution ratio for your samples.

Some PubMed article(s) citing the expression level of this target are as follows:

Boster Bio's internal QC testing used:

WB: 1:1000

Anti-COBRA1 (NELF B) Antibody (A12025) Images



Western blot of neonatal rat brain lysate showing specific immunolabeling of the ~62 kDa COBRA1 protein.

Submit a product review to Biocompare.com

Submit a review of this product to Biocompare.com to receive a \$20 Amazon.com giftcard! Your reviews help your fellow scientists make the right decisions. Thank you for your contribution.



Anti-COBRA1 (NELF B) Antibody