

## Anti-COBRA1/NELFB Antibody Picoband™

Catalog Number: A12025-1

### About NELFB

Cofactor of BRCA1, also known as COBRA1, is a human gene that encodes NELF-B. NELF-B is a subunit of negative elongation factor (NELF), which also includes NELF-A (WHSC2), either NELF-C or NELF-D (TH1L), and NELF-E (RDBP). NELF acts with DRB sensitivity-inducing factor (DSIF), a heterodimer of SPT4 (SUPT4H1) and SPT5 (SUPT5H), to cause transcriptional pausing of RNA polymerase II. COBRA1 was initially identified in a yeast two-hybrid screen using the BRCT1 domain of BRCA1 as bait.

### Overview

Product Name	Anti-COBRA1/NELFB Antibody Picoband™
Reactive Species	Human, Mouse, Rat
Description	Boster Bio Anti-COBRA1/NELFB Antibody Picoband™ catalog # A12025-1. Tested in ELISA, WB applications. This antibody reacts with Human, Mouse, Rat.
Application	ELISA, WB
Clonality	Polyclonal
Formulation	Each vial contains 4mg Trehalose, 0.9mg NaCl, 0.2mg Na <sub>2</sub> HPO <sub>4</sub> , 0.05mg NaN <sub>3</sub> .
Storage Instructions	Store at -20°C for one year from date of receipt. After reconstitution, at 4°C for one month. It can also be aliquotted and stored frozen at -20°C for six months. Avoid repeated freeze-thaw cycles.
Host	Rabbit
Uniprot ID	Q8WX92

### Technical Details

Immunogen	E. coli-derived human COBRA1 recombinant protein (Position: M1-E252).
Recommended Detection Systems	Boster recommends Enhanced Chemiluminescent Kit with anti-Rabbit IgG (EK1002) for Western blot.
Cross Reactivity	No cross-reactivity with other proteins.
Isotype	Rabbit IgG
Form	Lyophilized
Concentration	Adding 0.2 ml of distilled water will yield a concentration of 500 ug/ml.
Purification	Immunogen affinity purified.
Suggested Dilutions	Dilute the sample so that the expected range of concentrations fall within the detection range of this

kit.

If the expected range of concentration is unknown, a pilot test should be conducted to decide the optimal dilution ratio for your samples.

Some PubMed article(s) citing the expression level of this target are as follows:

Boster Bio's internal QC testing used:

Western blot, 0.1-0.5ug/ml

Direct ELISA, 0.1-0.5ug/ml

## Anti-COBRA1/NELFB Antibody Picoband™ (A12025-1) Images

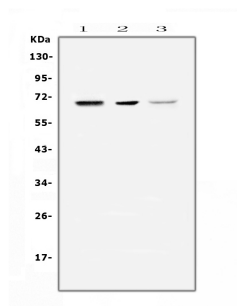


Figure 1. Western blot analysis of COBRA1 using anti-COBRA1 antibody (A12025-1).

Electrophoresis was performed on a 5-20% SDS-PAGE gel at 70V (Stacking gel) / 90V (Resolving gel) for 2-3 hours. The sample well of each lane was loaded with 50ug of sample under reducing conditions.

Lane 1: rat kidney tissue lysates,

Lane 2: mouse kidney tissue lysates,

Lane 3: human MDA-MB-231 whole cell lysates.

After Electrophoresis, proteins were transferred to a Nitrocellulose membrane at 150mA for 50-90 minutes.

Blocked the membrane with 5% Non-fat Milk/ TBS for 1.5 hour at RT. The membrane was incubated with rabbit anti-COBRA1 antigen affinity purified polyclonal antibody (Catalog # A12025-1) at 0.5 ug/mL overnight at 4°C, then washed with TBS-0.1%Tween 3 times with 5 minutes each and probed with a goat anti-rabbit IgG-HRP secondary antibody at a dilution of 1:10000 for 1.5 hour at RT. The signal is developed using an Enhanced Chemiluminescent detection (ECL) kit (Catalog # EK1002) with Tanon 5200 system. A specific band was detected for COBRA1 at approximately 66KD. The expected band size for COBRA1 is at 66KD.

## Submit a product review to Biocompare.com

Submit a review of this product to Biocompare.com to receive a \$20 Amazon.com giftcard! Your reviews help your fellow scientists make the right decisions. Thank you for your contribution.



Anti-COBRA1/NELFB Antibody™