

## Anti-RASSF10 Antibody

Catalog Number: A12028

### About RASSF10

RASSF10 is a member of the N-terminal Ras association domain-containing family of proteins, a family of tumor suppressor genes that are frequently epigenetically inactivated in cancer. These proteins consist of RASSF7-10 and are structurally distinct from RASSF1-6, containing the N-terminal Ras association domain but lacking the Sav/RASSF/Hippo protein interaction domains. While little is known of the function of RASSF10, it is inactivated in both childhood leukemia and gliomas. In secondary glioblastomas, RASSF10 methylation can be used as an independent prognostic associated with worst progression-free survival and overall survival.

### Overview

Product Name	Anti-RASSF10 Antibody
Reactive Species	Human
Description	Boster Bio Anti-RASSF10 Antibody (Catalog # A12028). Tested in ELISA, WB, IHC-P applications. This antibody reacts with Human.
Application	ELISA, IHC-P, WB
Clonality	Polyclonal
Formulation	RASSF10 Antibody is supplied in PBS containing 0.02% sodium azide.
Storage Instructions	RASSF10 antibody can be stored at 4 °C, stable for one year. Avoid repeated freeze-thaw cycles. Antibodies should not be exposed to prolonged high temperatures.
Host	Rabbit
Uniprot ID	A6NK89

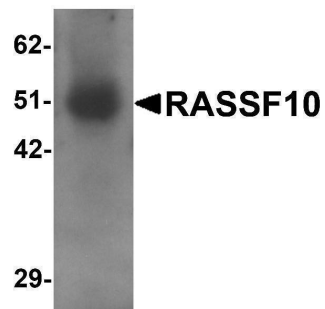
### Technical Details

Immunogen	RASSF10 antibody was raised against a 17 amino acid synthetic peptide near the amino terminus of human RASSF10. The immunogen is located within amino acids 50 - 100 of RASSF10.
Predicted Reactive Species	Chicken
Cross Reactivity	RASSF10 antibody will not cross-react with other RAS association domain-containing family members.
Isotype	IgG
Form	Liquid
Concentration	1 mg/mL
Purification	RASSF10 Antibody is affinity chromatography purified via peptide column.

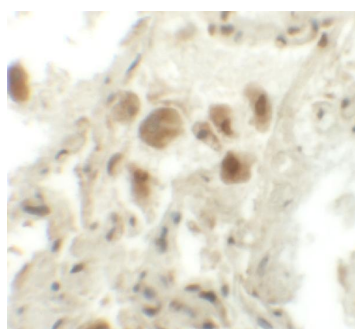
Suggested Dilutions

RASSF10 antibody can be used for detection of RASSF10 by Western blot at 1 ug/mL. Antibody can also be used for immunohistochemistry starting at 5 ug/mL.  
Antibody validated: Western Blot in human samples and Immunohistochemistry in human samples. All other applications and species not yet tested. Optimal dilutions for each application should be determined by the researcher.

## Anti-RASSF10 Antibody (A12028) Images



Western blot analysis of RASSF10 in human lung tissue lysate with RASSF10 antibody at 1 ug/mL



Immunohistochemistry of RASSF10 in human lung tissue with RASSF10 antibody at 5 ug/mL.

### Submit a product review to [Biocompare.com](https://www.biocompare.com)

Submit a review of this product to [Biocompare.com](https://www.biocompare.com) to receive a \$20 Amazon.com giftcard! Your reviews help your fellow scientists make the right decisions. Thank you for your contribution.



Anti-RASSF10 Antibody

For Research Use Only. Not for use in diagnostic procedures.