

Anti-LRFN4 Antibody

Catalog Number: A12062

About LRFN4

LRFN4 is one of a family of five transmembrane glycoproteins that are highly expressed in neuronal tissues. LRFN proteins share leucine-rich repeat (LRR)-immunoglobulin-like (Ig)-fibronectin type III (Fn)-transmembrane domain structure with other members of the LRR-Ig-Fn protein superfamily such as the Slitrk family of proteins. Expression of LRFN1, -3, and -4 mRNA was detected in embryonic neuronal cells, while Lrnf2 and Lrnf5 expression was primarily restricted to more mature cells. LRFN1, -2, and -4 bound to PDZ domains of postsynaptic PSD95, re-distributing PSD95 to the cell periphery. It has been suggested that the Lrnf proteins play a role in the developing and/or mature vertebrate nervous system. At least two isoforms of LRFN4 are known to exist.

Overview

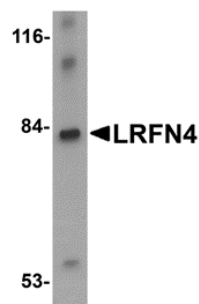
| | |
|----------------------|--|
| Product Name | Anti-LRFN4 Antibody |
| Reactive Species | Human, Mouse, Rat |
| Description | Boster Bio Anti-LRFN4 Antibody (Catalog # A12062). Tested in ELISA, WB, IHC-P, IF applications. This antibody reacts with Human, Mouse, Rat. |
| Application | ELISA, IF, IHC-P, WB |
| Clonality | Polyclonal |
| Formulation | LRFN4 Antibody is supplied in PBS containing 0.02% sodium azide. |
| Storage Instructions | LRFN4 antibody can be stored at 4°C for three months and -20°C, stable for up to one year. Avoid repeated freeze-thaw cycles. Antibodies should not be exposed to prolonged high temperatures. |
| Host | Rabbit |
| Uniprot ID | Q6PJG9 |

Technical Details

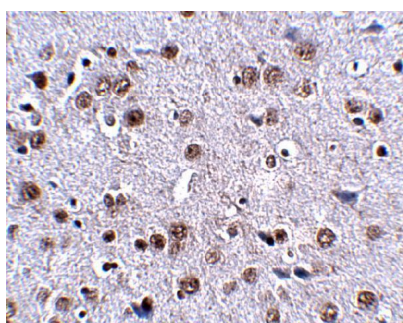
| | |
|----------------------------|--|
| Immunogen | LRFN4 antibody was raised against a 14amino acid synthetic peptide near the carboxy terminus of human LRFN4. The immunogen is located within amino acids 550 - 600 of LRFN4. |
| Predicted Reactive Species | Bovine |
| Cross Reactivity | This antibody is predicted to not cross-react with other members of the LRFN family. |
| Isotype | IgG |
| Form | Liquid |
| Concentration | 1 mg/mL |

| | |
|---------------------|---|
| Purification | LRFN4 Antibody is affinity chromatography purified via peptide column. |
| Suggested Dilutions | LRFN4 antibody can be used for detection of LRFN4 by Western blot at 1 ug/mL. Antibody can also be used for immunohistochemistry starting at 2.5 ug/mL. For immunofluorescence start at 20 ug/mL. Antibody validated: Western Blot in rat samples; Immunohistochemistry in mouse samples and Immunofluorescence in mouse samples. All other applications and species not yet tested. Optimal dilutions for each application should be determined by the researcher. |

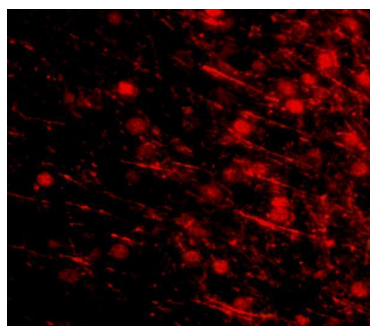
Anti-LRFN4 Antibody (A12062) Images



Western blot analysis of LRFN4 in rat brain lysate with LRFN4 antibody at 1 ug/mL.



Immunohistochemistry of LRFN4 in mouse brain tissue with LRFN4 antibody at 2.5 ug/mL.



Immunofluorescence of LRFN4 in mouse brain tissue with LRFN4 antibody at 20 ug/mL.

Submit a product review to [Biocompare.com](https://www.biocompare.com)

Submit a review of this product to [Biocompare.com](https://www.biocompare.com) to receive a \$20 Amazon.com giftcard! Your reviews help your fellow scientists make the right decisions. Thank you for your contribution.



Anti-LRFN4 Antibody

For Research Use Only. Not for use in diagnostic procedures.