

Anti-NEEP21 NSG1 Antibody

Catalog Number: A12107

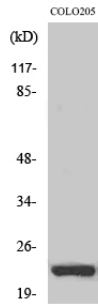
Overview

Product Name	Anti-NEEP21 NSG1 Antibody
Reactive Species	Human, Mouse, Rat
Description	Boster Bio Anti-NEEP21 NSG1 Antibody catalog # A12107. Tested in ELISA, IHC-P, WB applications. This antibody reacts with Human, Mouse, Rat.
Application	ELISA, IF, IHC, WB
Clonality	Polyclonal
Formulation	Liquid in PBS containing 50% glycerol, 0.5% stabilizing protein and 0.02% sodium azide. This antibody is supplied in a stabilized formulation. Compatibility with conjugation reactions depends on the chemistry of the conjugation method used. For conjugation methods that are not compatible with the stabilizing components present in this formulation, a carrier-free antibody format is required.
Storage Instructions	Store at -20°C for one year. For short term storage and frequent use, store at 4°C for up to one month. Avoid repeated freeze-thaw cycles.
Host	Rabbit
Uniprot ID	P42857

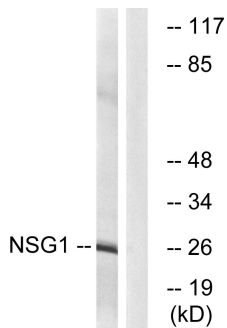
Technical Details

Immunogen	The antiserum was produced against synthesized peptide derived from human NSG1. AA range:112-161
Isotype	IgG
Form	Liquid
Concentration	1 mg/ml
Purification	The antibody was affinity-purified from rabbit antiserum by affinity-chromatography using epitope-specific immunogen.
Suggested Dilutions	WB 1:500-1:2000 IHC 1:100-1:300 ELISA 1:20000 IF 1:50-200

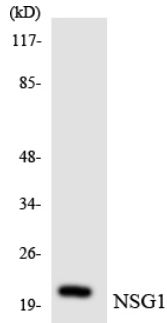
Anti-NEEP21 NSG1 Antibody (A12107) Images



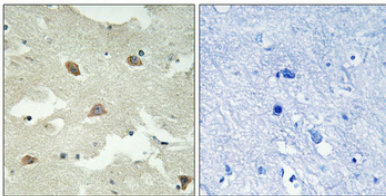
Western Blot analysis of various cells using NEEP21 Polyclonal Antibody diluted at 1:2000



Western blot analysis of lysates from COLO cells, using NSG1 Antibody. The lane on the right is blocked with the synthesized peptide.



Western blot analysis of the lysates from K562 cells using NSG1 antibody.



Immunohistochemical analysis of paraffin-embedded Human brain. Antibody was diluted at 1:100 (4° overnight). High-pressure and temperature Tris-EDTA, pH8.0 was used for antigen retrieval. Negative control (right) obtained from antibody was pre-absorbed by immunogen peptide.

Submit a product review to Biocompare.com

Submit a review of this product to Biocompare.com to receive a \$20 Amazon.com giftcard! Your reviews help your fellow scientists make the right decisions. Thank you for your contribution.



Anti-NEEP21 NSG1 Antibody

For Research Use Only. Not for use in diagnostic procedures.