

Anti-Iporin RUSC2 Antibody

Catalog Number: A12113

About RUSC2

RUSC2, also known as Iporin, shares with the related protein RUSC1 a common domain structure of RUN, leucine zipper and SH3 domain in addition to over 30% amino acid identity. RUSC2 is a rab1-interacting protein that also interacts with GM130, another rab1-interacting protein. RUSC2 interacts with specific rab1 isoforms with different rab-binding specificity. It has been suggested that RUSC2 may function as a link between the targeting of ER derived vesicles triggered by the rab1 GTPase and a signaling pathway composed of proteins containing SH3 and/or poly-proline regions.

Overview

Product Name	Anti-Iporin RUSC2 Antibody
Reactive Species	Human
Description	Boster Bio Anti-Iporin RUSC2 Antibody (Catalog # A12113). Tested in ELISA, IHC-P applications. This antibody reacts with Human.
Application	ELISA, IHC-P
Clonality	Polyclonal
Formulation	RUSC2 Antibody is supplied in PBS containing 0.02% sodium azide.
Storage Instructions	RUSC2 antibody can be stored at 4°C for three months and -20°C, stable for up to one year. Avoid repeated freeze-thaw cycles. Antibodies should not be exposed to prolonged high temperatures.
Host	Rabbit
Uniprot ID	Q8N2Y8

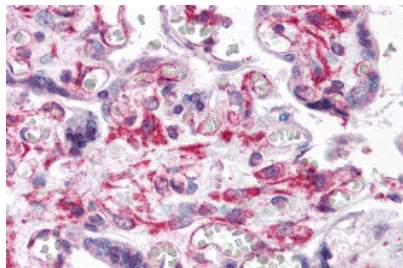
Technical Details

Immunogen	RUSC2 antibody was raised against a 15 amino acid synthetic peptide from near the carboxy terminus of human RUSC2. The immunogen is located within amino acids 1410 - 1460 of RUSC2.
Predicted Reactive Species	Mouse
Cross Reactivity	At least three isoforms are known to exist; this antibody will only detect the longest isoform. This antibody is predicted to not cross-react with RUSC1.
Isotype	IgG
Form	Liquid
Concentration	1 mg/mL
Purification	RUSC2 Antibody is affinity chromatography purified via peptide column.

Suggested Dilutions

RUSC2 antibody can be used for detection of RUSC2 by immunohistochemistry at 5 ug/mL.
Antibody validated: Immunohistochemistry in human samples. All other applications and species not yet tested. Optimal dilutions for each application should be determined by the researcher.

Anti-Iporin RUSC2 Antibody (A12113) Images



Immunohistochemistry of RUSC2 in human placenta tissue with RUSC2 antibody at 5 ug/mL.

Submit a product review to [Biocompare.com](https://www.biocompare.com)

Submit a review of this product to [Biocompare.com](https://www.biocompare.com) to receive a \$20 Amazon.com giftcard! Your reviews help your fellow scientists make the right decisions. Thank you for your contribution.



Anti-Iporin RUSC2 Antibody

For Research Use Only. Not for use in diagnostic procedures.