

## Anti-SLF2 Antibody Picoband®

Catalog Number: A12129-1

### About SLF2

Enables ubiquitin protein ligase binding activity. Involved in several processes, including positive regulation of cellular component organization; positive regulation of double-strand break repair; and protein localization to site of double-strand break. Located in PML body; chromatin; and site of double-strand break. Implicated in mosaic variegated aneuploidy syndrome.

### Overview

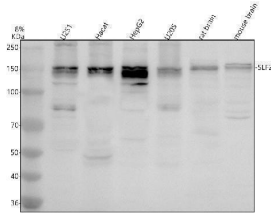
Product Name	Anti-SLF2 Antibody Picoband®
Reactive Species	Human, Mouse, Rat
Description	Boster Bio Anti-SLF2 Antibody Picoband® catalog # A12129-1. Tested in WB, ICC, IF, ELISA applications. This antibody reacts with Human, Mouse, Rat. The brand Picoband indicates this is a premium antibody that guarantees superior quality, high affinity, and strong signals with minimal background in Western blot applications. Only our best-performing antibodies are designated as Picoband, ensuring unmatched performance.
Application	ELISA, IF, ICC, WB
Clonality	Polyclonal
Formulation	Each vial contains 4 mg Trehalose, 0.9 mg NaCl, 0.2 mg Na <sub>2</sub> HPO <sub>4</sub> .
Storage Instructions	At -20°C for one year from date of receipt. After reconstitution, at 4°C for one month. It can also be aliquotted and stored frozen at -20°C for six months. Avoid repeated freezing and thawing.
Host	Rabbit
Uniprot ID	Q8IX21

### Technical Details

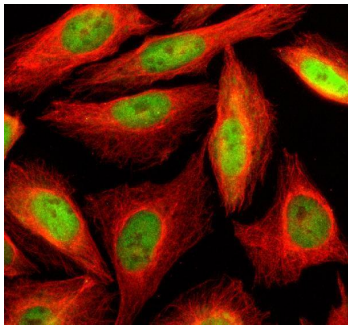
Immunogen	E.coli-derived human SLF2 recombinant protein (Position: E90-N1157). Human SLF2 shares 86.2% amino acid (aa) sequence identity with mouse SLF2.
Form	Lyophilized
Concentration	Adding 0.2 ml of distilled water will yield a concentration of 500 ug/ml.
Purification	Immunogen affinity purified.
Suggested Dilutions	Western blot, 0.25-0.5 ug/ml, Human, Mouse, Rat Immunocytochemistry/Immunofluorescence, 5 ug/ml, Human ELISA, 0.1-0.5 ug/ml



## Anti-SLF2 Antibody Picoband® (A12129-1) Images



Western blot analysis of SLF2 using anti-SLF2 antibody (A12129-1). Electrophoresis was performed on a 8% SDS-PAGE gel at 80V (Stacking gel) / 120V (Resolving gel) for 2 hours. The sample well of each lane was loaded with 30 ug of sample under reducing conditions. Lane 1: human U251 whole cell lysates, Lane 2: human Hacat whole cell lysates, Lane 3: human HepG2 whole cell lysates, Lane 4: human U2OS whole cell lysates, Lane 5: rat brain tissue lysates, Lane 6: mouse brain tissue lysates. After electrophoresis, proteins were transferred to a nitrocellulose membrane at 150 mA for 50-90 minutes. Blocked the membrane with 5% non-fat milk/TBS for 1.5 hour at RT. The membrane was incubated with rabbit anti-SLF2 antigen affinity purified polyclonal antibody (A12129-1) at 0.5 ug/mL overnight at 4°C, then washed with TBS-0.1% Tween 3 times with 5 minutes each and probed with a goat anti-rabbit IgG-HRP secondary antibody at a dilution of 1:5000 for 1.5 hour at RT. The signal is developed using an ECL Plus Western Blotting Substrate (Catalog # AR1196-200) with Tanon 5200 system. A specific band was detected for SLF2 at approximately 150 kDa. The expected band size for SLF2 is at 132 kDa.



IF analysis of SLF2 using anti-SLF2 antibody (A12129-1) and anti-Beta Tubulin antibody (M01857-3). SLF2 was detected in an immunocytochemical section of U2OS cells. Enzyme antigen retrieval was performed using IHC enzyme antigen retrieval reagent (AR0022) for 15 mins. The cells were blocked with 10% goat serum. And then incubated with 5 ug/mL rabbit anti-SLF2 Antibody (A12129-1) and mouse anti-Beta Tubulin antibody (M01857-3) overnight at 4°C. DyLight®488 Conjugated Goat Anti-Rabbit IgG (BA1127) and Cy3 Conjugated Goat Anti-Mouse IgG (BA1031) were used as secondary antibody at 1:500 dilution and incubated for 30 minutes at 37°C. Visualize using a fluorescence microscope and filter sets appropriate for the label used.

### Submit a product review to [Biocompare.com](https://www.biocompare.com)

Submit a review of this product to [Biocompare.com](https://www.biocompare.com) to receive a \$20 Amazon.com giftcard! Your reviews help your fellow scientists make the right decisions. Thank you for your contribution.



### Anti-SLF2 Antibody

For Research Use Only. Not for use in diagnostic procedures.