

## Anti-SGSM2 Antibody

Catalog Number: A12146

### About SGSM2

Small G proteins such as RAP and RAB proteins are the key molecules in intracellular signal transduction and vesicle transportation. A novel protein family small G protein signaling modulator (SGSM) consisting of three members SGSM1-3 bind to RAP and RAB family proteins. All three SGSM proteins possess both a RUN domain and a TBC domain. SGSM2 is a Rab9A effector that activates GTP hydrolysis by Rab32 and Rab33B proteins.

### Overview

Product Name	Anti-SGSM2 Antibody
Reactive Species	Human, Mouse, Rat
Description	Boster Bio Anti-SGSM2 Antibody (Catalog # A12146). Tested in ELISA, WB, IF applications. This antibody reacts with Human, Mouse, Rat.
Application	ELISA, IF, WB
Clonality	Polyclonal
Formulation	SGSM2 Antibody is supplied in PBS containing 0.02% sodium azide.
Storage Instructions	SGSM2 antibody can be stored at 4°C for three months and -20°C, stable for up to one year. Avoid repeated freeze-thaw cycles. Antibodies should not be exposed to prolonged high temperatures.
Host	Rabbit
Uniprot ID	O43147

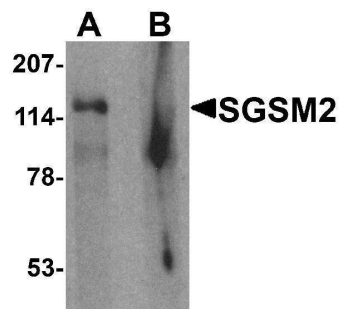
### Technical Details

Immunogen	SGSM2 antibody was raised against an 18 amino acid synthetic peptide near the center of human SGSM2. The immunogen is located within amino acids 650 - 700 of SGSM2.
Predicted Reactive Species	Mouse
Cross Reactivity	Multiple isoforms of SGSM2 are known to exist. SGSM2 antibody is predicted to not cross react with other SGSM family proteins.
Isotype	IgG
Form	Liquid
Concentration	1 mg/mL
Purification	SGSM2 Antibody is affinity chromatography purified via peptide column.
Suggested Dilutions	SGSM2 antibody can be used for detection of SGSM2 by Western blot at 1 ug/mL. For

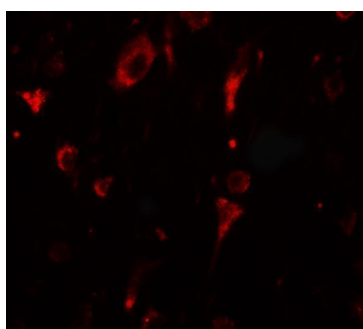
immunofluorescence start at 20 ug/mL.

Antibody validated: Western Blot in human samples and Immunofluorescence in human samples. All other applications and species not yet tested. Optimal dilutions for each application should be determined by the researcher.

## Anti-SGSM2 Antibody (A12146) Images



Western blot analysis of SGSM2 in human cerebellum tissue lysate with SGSM2 antibody at 1 ug/ml in (A) the absence and (B) the presence of blocking peptide



Immunofluorescence of SGSM2 in human brain tissue with SGSM2 antibody at 20 ug/mL.

### Submit a product review to [Biocompare.com](https://www.biocompare.com)

Submit a review of this product to [Biocompare.com](https://www.biocompare.com) to receive a \$20 Amazon.com giftcard! Your reviews help your fellow scientists make the right decisions. Thank you for your contribution.



Anti-SGSM2 Antibody

For Research Use Only. Not for use in diagnostic procedures.