

Anti-MAK10 NAA35 Antibody

Catalog Number: A12206

About MAK10

The MAK10 gene encodes a 733-amino acid protein with several regions of similarity to T cell receptor alpha-subunit V (variable) regions in yeast. The mammalian homologue of yeast MAK10, also known as EGAP, is one subunit of a novel N-terminal acetyltransferase (NAT) that is highly conserved among vertebrate species. It is expressed in a variety of tissues in the developing rat embryo but restricted in expression in the adult, remaining detectable only in tissues undergoing continual cell renewal or in cells responding to pathological injury. The MAK10-NAT complex is an essential regulatory enzyme controlling the function of a subset of proteins required for embryonic growth control and vessel development. This complex functionally co-assembles in mammalian cells to regulate cell proliferation and is essential for embryonic development, at least in part through the regulation of target of rapamycin (TOR) signaling events. At least two isoforms of MAK10 are known to exist.

Overview

Product Name	Anti-MAK10 NAA35 Antibody
Reactive Species	Human, Mouse, Rat
Description	Boster Bio Anti-MAK10 NAA35 Antibody (Catalog # A12206). Tested in ELISA, WB, IHC-P applications. This antibody reacts with Human, Mouse, Rat.
Application	ELISA, IHC-P, WB
Clonality	Polyclonal
Formulation	MAK10 Antibody is supplied in PBS containing 0.02% sodium azide.
Storage Instructions	MAK10 antibody can be stored at 4°C for three months and -20°C, stable for up to one year. Avoid repeated freeze-thaw cycles. Antibodies should not be exposed to prolonged high temperatures.
Host	Rabbit
Uniprot ID	Q5VZE5

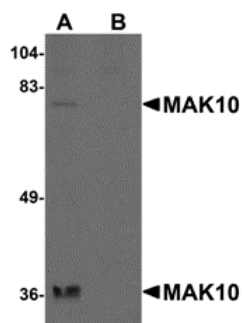
Technical Details

Immunogen	MAK10 antibody was raised against a 19 amino acid synthetic peptide near the amino terminus of human MAK10. The immunogen is located within amino acids 190 - 240 of MAK10.
Predicted Reactive Species	Chicken
Isotype	IgG
Form	Liquid
Concentration	1 mg/mL
Purification	MAK10 Antibody is affinity chromatography purified via peptide column.

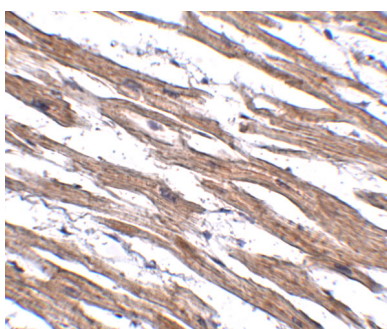
Suggested Dilutions

MAK10 antibody can be used for detection of MAK10 by Western blot at 1 ug/mL. Antibody can also be used for immunohistochemistry starting at 2.5 ug/mL.
Antibody validated: Western Blot in rat samples and Immunohistochemistry in human samples. All other applications and species not yet tested. Optimal dilutions for each application should be determined by the researcher.

Anti-MAK10 NAA35 Antibody (A12206) Images



Western blot analysis of MAK10 in rat heart tissue lysate with MAK10 antibody at 1 ug/mL in the (A) absence and (B) presence of blocking peptide.



Immunohistochemistry of MAK10 in human heart tissue with MAK10 antibody at 2.5 ug/mL.

Submit a product review to [Biocompare.com](https://www.biocompare.com)

Submit a review of this product to [Biocompare.com](https://www.biocompare.com) to receive a \$20 Amazon.com giftcard! Your reviews help your fellow scientists make the right decisions. Thank you for your contribution.



Anti-MAK10 NAA35 Antibody

For Research Use Only. Not for use in diagnostic procedures.