

Anti-CHRAC1 Antibody

Catalog Number: A12215-1

Overview

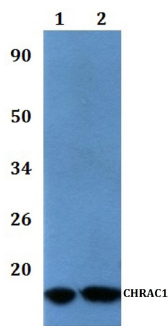
| | |
|----------------------|--|
| Product Name | Anti-CHRAC1 Antibody |
| Reactive Species | Human, Mouse, Rat |
| Description | Boster Bio Anti-CHRAC1 Antibody catalog # A12215-1. Tested in WB applications. This antibody reacts with Human, Mouse, Rat. |
| Application | WB |
| Clonality | Polyclonal |
| Formulation | Rabbit IgG, 1mg/ml in PBS with 0.02% sodium azide, 50% glycerol, pH7.2 |
| Storage Instructions | Store at -20°C for one year. For short term storage and frequent use, store at 4°C for up to one month. Avoid repeated freeze-thaw cycles. |
| Host | Rabbit |
| Uniprot ID | Q9NRG0 |

Technical Details

| | |
|---------------------|---|
| Form | Liquid |
| Purification | The antibody was affinity-purified from rabbit antiserum by affinity-chromatography using epitope-specific immunogen and the purity is > 95% (by SDS-PAGE). |
| Suggested Dilutions | <p>Dilute the sample so that the expected range of concentrations fall within the detection range of this kit.</p> <p>If the expected range of concentration is unknown, a pilot test should be conducted to decide the optimal dilution ratio for your samples.</p> <p>Some PubMed article(s) citing the expression level of this target are as follows: Boster Bio's internal QC testing used WB: 1:500~1:1000</p> <p>For protocols, please visit https://www.bosterbio.com/protocol-and-troubleshooting/</p> |

Anti-CHRAC1 Antibody (A12215-1) Images

Figure 1. Western blotting validation for Anti-CHRAC1 Antibody A12215-1



Western blot (WB) analysis of CHRAC1 polyclonal antibody at 1:500 dilution Lane1:HEK293T whole cell lysate Lane2:RAW264.7 whole cell lysate Lane3:PC12 whole cell lysate
Electrophoresis was performed on a SDS-PAGE gel. To determine SDS-PAGE gel concentration

Submit a product review to Biocompare.com

Submit a review of this product to Biocompare.com to receive a \$20 Amazon.com giftcard! Your reviews help your fellow scientists make the right decisions. Thank you for your contribution.



Anti-CHRAC1 Antibody