

## Anti-SIPA1L2 Antibody

Catalog Number: A12227

### About SIPA1L2

Signal-induced proliferation associated-like protein 2 (SIPA1L2) is a member of the SIPA1 family of RapGAPs. Little is known of the role of the SIPA1L2 protein, but recent studies of SIPA indicate that its deregulation can cause myeloproliferative stem cell disorders in mice and increased metastases in human cancers. Other studies suggest SIPA1L1 may play important roles in embryo development and control of cell proliferation. Based on the amount of homology between SIPA family members, it is likely that SIPA1L2 plays a role in embryo development and cell proliferation, possibly including oncogenesis.

### Overview

Product Name	Anti-SIPA1L2 Antibody
Reactive Species	Human, Mouse, Rat
Description	Boster Bio Anti-SIPA1L2 Antibody (Catalog # A12227). Tested in ELISA, WB, IHC-P, IF applications. This antibody reacts with Human, Mouse, Rat.
Application	ELISA, IF, IHC-P, WB
Clonality	Polyclonal
Formulation	SIPA1L2 Antibody is supplied in PBS containing 0.02% sodium azide.
Storage Instructions	SIPA1L2 antibody can be stored at 4°C for three months and -20°C, stable for up to one year. Avoid repeated freeze-thaw cycles. Antibodies should not be exposed to prolonged high temperatures.
Host	Rabbit
Uniprot ID	Q9P2F8

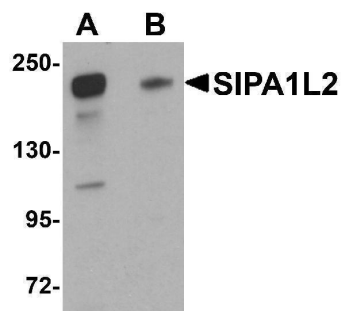
### Technical Details

Immunogen	SIPA1L2 antibody was raised against a 19 amino acid synthetic peptide from near the amino terminus of human SIPA1L2. The immunogen is located within the first 50 amino acids of SIPA1L2.
Predicted Reactive Species	Chicken
Isotype	IgG
Form	Liquid
Concentration	1 mg/mL
Purification	SIPA1L2 Antibody is affinity chromatography purified via peptide column.
Suggested Dilutions	SIPA1L2 antibody can be used for detection of SIPA1L2 by Western blot at 0.5 - 1 ug/mL. Antibody can also be used for immunohistochemistry starting at 5 ug/mL. For immunofluorescence start at 20

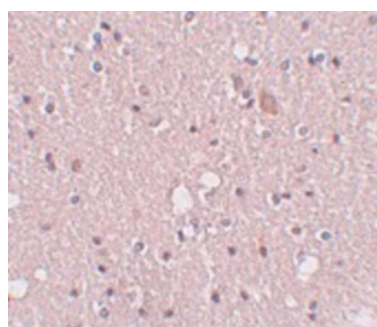
ug/mL.

Antibody validated: Western Blot in rat samples; Immunohistochemistry in human samples and Immunofluorescence in human samples. All other applications and species not yet tested. Optimal dilutions for each application should be determined by the researcher.

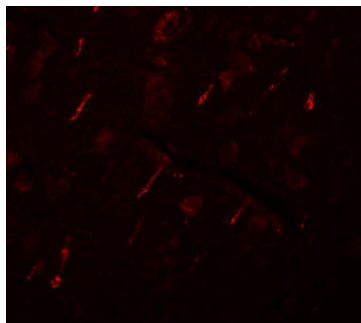
## Anti-SIPA1L2 Antibody (A12227) Images



Western blot analysis of SIPA1L2 in rat brain tissue lysate with SIPA1L2 antibody at 1 ug/mL in (A) the absence and (B) the presence of blocking peptide.



Immunohistochemistry of SIPA1L2 in human brain tissue with SIPA1L2 antibody at 5 ug/mL.



Immunofluorescence of SIPA1L2 in human brain tissue with SIPA1L2 antibody at 20 ug/mL.

### Submit a product review to [Biocompare.com](https://www.biocompare.com)

Submit a review of this product to [Biocompare.com](https://www.biocompare.com) to receive a \$20 Amazon.com giftcard! Your reviews help your fellow scientists make the right decisions. Thank you for your contribution.



Anti-SIPA1L2 Antibody

For Research Use Only. Not for use in diagnostic procedures.