

Anti-FRMPD2 Antibody

Catalog Number: A12236

About FRMPD2

The FERM and PDZ domain containing (FRMPD) protein family consists of four proteins that contain a FERM (Four-point-one, erzin, radixin, moesin) domain and at least one PDZ (PSD-95/Discs large/Zonula-occludens-1) domain. FRMPD2 also contains an N-terminal KIND domain and three PDZ domains and is structurally similar to the protein tyrosine phosphatase PTP-BL. FRMPD2 is localized in a polarized fashion in epithelial cells at the basolateral membrane and partially co-localizes with the tight-junction marker protein Zonula-occludens-1. Suppression of FRMPD2 expression via RNAi in Caco-2 cells results in an impairment of tight junction formation, indicating that FRMPD2 plays a major role in tight junction formation. Other experiments indicate that FRMPD2 is a binding partner to several catenin family members and recruitment of FRMPD2 to cell-cell contacts is dependent on E-cadherin-mediated cell-cell adhesion.

Overview

Product Name	Anti-FRMPD2 Antibody
Reactive Species	Human, Mouse, Rat
Description	Boster Bio Anti-FRMPD2 Antibody (Catalog # A12236). Tested in ELISA, WB, IHC-P applications. This antibody reacts with Human, Mouse, Rat.
Application	ELISA, IHC-P, WB
Clonality	Polyclonal
Formulation	FRMPD2 Antibody is supplied in PBS containing 0.02% sodium azide.
Storage Instructions	FRMPD2 antibody can be stored at 4°C for three months and -20°C, stable for up to one year. Avoid repeated freeze-thaw cycles. Antibodies should not be exposed to prolonged high temperatures.
Host	Rabbit
Uniprot ID	Q68DX3

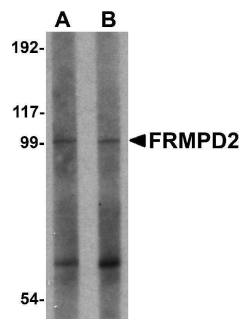
Technical Details

Immunogen	FRMPD2 antibody was raised against a 15 amino acid synthetic peptide from near the amino terminus of human FRMPD2. The immunogen is located within amino acids 80 - 130 of FRMPD2.
Predicted Reactive Species	Chicken
Isotype	IgG
Form	Liquid
Concentration	1 mg/mL
Purification	FRMPD2 Antibody is affinity chromatography purified via peptide column.

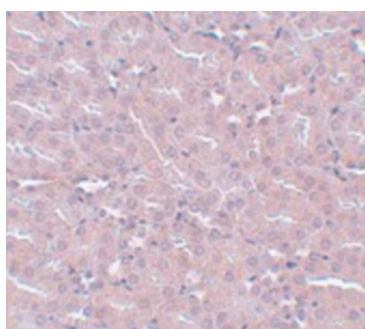
Suggested Dilutions

FRMPD2 antibody can be used for detection of FRMPD2 by Western blot at 1 - 2 ug/mL. Antibody can also be used for immunohistochemistry starting at 5 ug/mL.
Antibody validated: Western Blot in rat samples and Immunohistochemistry in mouse samples. All other applications and species not yet tested. Optimal dilutions for each application should be determined by the researcher.

Anti-FRMPD2 Antibody (A12236) Images



Western blot analysis of FRMPD2 in rat kidney tissue lysate with FRMPD2 antibody at (A) 1 and (B) 2 ug/mL.



Immunohistochemistry of FRMPD2 in mouse kidney tissue with FRMPD2 antibody at 5 ug/mL.

Submit a product review to [Biocompare.com](https://www.biocompare.com)

Submit a review of this product to [Biocompare.com](https://www.biocompare.com) to receive a \$20 Amazon.com giftcard! Your reviews help your fellow scientists make the right decisions. Thank you for your contribution.



Anti-FRMPD2 Antibody

For Research Use Only. Not for use in diagnostic procedures.