

## Anti-REEP3 Antibody

Catalog Number: A12243

### About REEP3

Mammalian odorant receptors require accessory proteins such as RTP1 and RTP2 for functional cell surface expression. Receptor expression-enhancing protein (REEP) family members are transmembrane proteins which interact with odorant receptor proteins and may enhance the odorant receptor responses to odorants. Recently studies have shown other chemosensory receptors such as bitter taste receptors are also influenced by RTP and REEP family members. REEP3 has also been suggested as a novel candidate gene for autism and as a loci influencing the plasma levels of the liver enzyme alkaline phosphatase.

### Overview

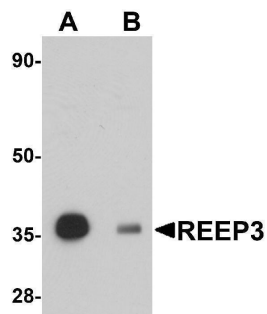
Product Name	Anti-REEP3 Antibody
Reactive Species	Human, Mouse, Rat
Description	Boster Bio Anti-REEP3 Antibody (Catalog # A12243). Tested in ELISA, WB, IHC-P, IF, ICC applications. This antibody reacts with Human, Mouse, Rat.
Application	ELISA, IF, IHC-P, ICC, WB
Clonality	Polyclonal
Formulation	REEP3 Antibody is supplied in PBS containing 0.02% sodium azide.
Storage Instructions	REEP3 antibody can be stored at 4°C for three months and -20°C, stable for up to one year. Avoid repeated freeze-thaw cycles. Antibodies should not be exposed to prolonged high temperatures.
Host	Rabbit
Uniprot ID	Q6NUK4

### Technical Details

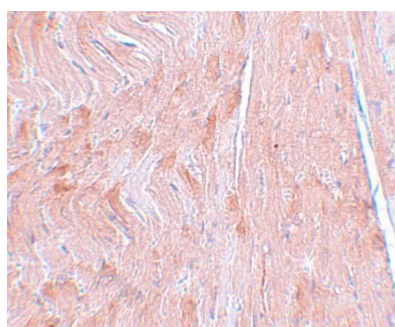
Immunogen	REEP3 antibody was raised against a 17 amino acid synthetic peptide near the carboxy terminus of human REEP3. The immunogen is located within the last 50 amino acids of REEP3.
Predicted Reactive Species	Chicken
Isotype	IgG
Form	Liquid
Concentration	1 mg/mL
Purification	REEP3 Antibody is affinity chromatography purified via peptide column.
Suggested Dilutions	REEP3 antibody can be used for detection of REEP3 by Western blot at 1 ug/mL. Antibody can also be used for immunohistochemistry starting at 5 ug/mL. For immunofluorescence start at 20 ug/mL.

Antibody validated: Western Blot in rat samples; Immunohistochemistry in mouse samples; Immunocytochemistry in human samples and Immunofluorescence in human and mouse samples. All other applications and species not yet tested. Optimal dilutions for each application should be determined by the researcher.

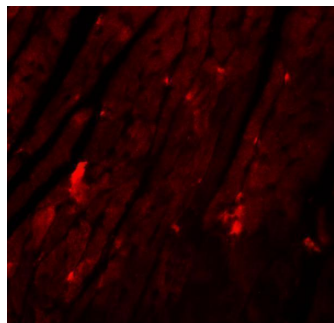
## Anti-REEP3 Antibody (A12243) Images



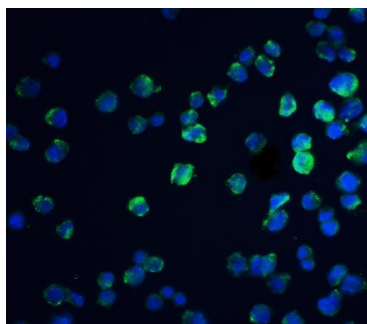
Western blot analysis of REEP3 in rat heart tissue lysate with REEP3 antibody at 1 ug/mL in (A) the absence and (B) the presence of blocking peptide.



Immunohistochemistry of REEP3 in mouse heart tissue with REEP3 antibody at 5 ug/mL.

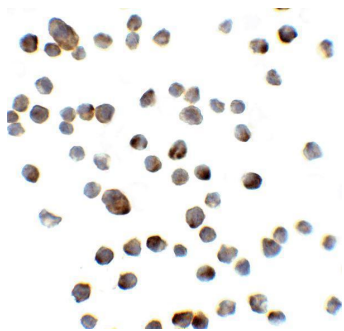


Immunofluorescence of REEP3 in mouse heart tissue with REEP3 antibody at 20 ug/mL.



Immunofluorescence of REEP3 in A431 cells with REEP3 antibody at 20 ug/mL. Green: REEP3 Antibody (A12243) Blue: DAPI staining

Immunocytochemistry of REEP3 in A431 cells with REEP3 antibody at 5 ug/mL.



## Submit a product review to Biocompare.com

Submit a review of this product to Biocompare.com to receive a \$20 Amazon.com giftcard! Your reviews help your fellow scientists make the right decisions. Thank you for your contribution.



Anti-REEP3 Antibody

For Research Use Only. Not for use in diagnostic procedures.